

HAZARDOUS LOCATION LINEAR LED LUMINAIRE VL SERIES

HLL VL SERIES

DESCRIPTION

The HLL VL Series hazardous location luminaires have been developed for applications with expected exposure to flammable gases, vapours, combustible particles and ignitable fibres. Designed to deliver superior performance in a robust package for mid power applications as a direct replacement to legacy UL844 T8 lighting systems to provide substantially greater reliability, longevity and energy savings.

An isolated driver enclosure and specific structure resonance abatement allow the HLL VL series compatibility in applications where limited 3 Axis vibration is present. With a unique integrated lensing system, the HLL VL offers very low maintenance requirements and provides exceptional performance in a value added package.

The HLL VL Series is available in 4 power configurations and 2 lengths providing greater field integration flexibility. The very low copper content heavy cast housing is precision machined on a 5 axis CNC and features stainless hardware and a trunnion bracket. The use of superior raw materials results in a robust and reliable package that is listed C1D2 Group A, B, C & D classifications. Additionally the HLL VL is UL1598A marine rated.

The HLL VL hazardous location luminaire is protected with a proprietary 5 step epowder coating process for high strength and durability in exceptionally harsh applications. The HLL VL Series is fully sealed to NEMA 4x/IP66 standards allowing it to reliably operate in high humidity environments.

The HLL VL Series LED luminaire is shipped with on board digital drivers with 4 way power protection with built in SPD which provides stable long term performance to guard against in field failures and light depreciation. All versions are equipped with additional Surge Protection Devices (Min. 10KV SPD) providing multi layer protection of power cycle disturbances. Proven performance under severe conditions with a robust design and best in class SMD LED engines. The LEDRAYS HLL VL Series is designed with the same prodigious attention to detail as the entire line of hazardous location luminaires.

The HLL VL Series offers exceptional value by benefiting from pragmatic cost reduction efforts including production line leveraging, supply chain optimization and by using cross platform components.



APPLICATIONS

- Mining/Extraction Sites
- Petrochemical
- Paints/Inks/Coatings Production
- Test Chambers
- Service Tunnels
- Grain Production & Storage
- Pulp & Paper
- Water & Waste Water
- Offshore
- Food & Beverage Processing

CERTIFICATES & RATINGS

Class I, Division 2, Groups A, B, C & D
Class II, Division 1 & 2, Groups E, F & G
Class III
UL844 & UL1598 Wet Location
CSA C22.2 No.137/No.250.0
T3 Temperature Code
NEMA 4X, IP66, IK10

HLL VL SERIES SPECIFICATIONS

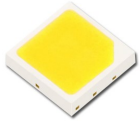
FIXTURE SERIES	POWER	LED TYPE	CCT	DISTRIBUTION	EXIT LUMEN RANGE	OPERATING VOLTAGE	IP RATING	DIMENSIONS**
LR-HLL-VL-210-XX	10W*	SMD	5000K (4000-6500K avail)	120°	1,300-1,450lm	AC90-277V AC180-508V	IP66	L600mm x W119.5mm x H224.3mm
LR-HLL-VL-215-XX	15W	SMD	5000K (4000-6500K avail)	120°	1,950-2,175lm	AC90-277V AC180-508V	IP66	L600mm x W119.5mm x H224.3mm
LR-HLL-VL-220-XX	20W*	SMD	5000K (4000-6500K avail)	120°	2,600-2,900lm	AC90-277V AC180-508V	IP66	L600mm x W119.5mm x H224.3mm
LR-HLL-VL-225-XX	25W	SMD	5000K (4000-6500K avail)	120°	3,250-3,625lm	AC90-277V AC180-508V	IP66	L600mm x W119.5mm x H224.3mm
LR-HLL-VL-430-XX	30W	SMD	5000K (4000-6500K avail)	120°	3,900-4,350lm	AC90-277V AC180-508V	IP66	L1200mm x W119.5mm x H224.3mm
LR-HLL-VL-435-XX	35W	SMD	5000K (4000-6500K avail)	120°	4,550-5,075lm	AC90-277V AC180-508V	IP66	L1200mm x W119.5mm x H224.3mm
LR-HLL-VL-440-XX	40W*	SMD	5000K (4000-6500K avail)	120°	5,200-5,800lm	AC90-277V AC180-508V	IP66	L1200mm x W119.5mm x H224.3mm
LR-HLL-VL-445-XX	45W	SMD	5000K (4000-6500K avail)	120°	5,850-6,525lm	AC90-277V AC180-508V	IP66	L1200mm x W119.5mm x H224.3mm
LR-HLL-VL-450-XX	50W	SMD	5000K (4000-6500K avail)	120°	6,500-7,250lm	AC90-277V AC180-508V	IP66	L1200mm x W119.5mm x H224.3mm
LR-HLL-VL-455-XX	55W	SMD	5000K (4000-6500K avail)	120°	7,150-7,975lm	AC90-277V AC180-508V	IP66	L1200mm x W119.5mm x H224.3mm
LR-HLL-VL-480-XX	60W*	SMD	5000K (4000-6500K avail)	120°	7,800-8,700lm	AC90-277V AC180-508V	IP66	L1200mm x W119.5mm x H224.3mm

* Standard power configurations

** With trunnion bracket



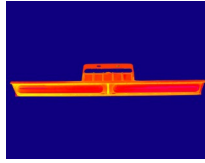
FEATURES



EMC SMD PACKAGE



CLEAR OR OPAQUE POLYCARBONATE FASCIA



SUPERIOR THERMAL PERFORMANCE

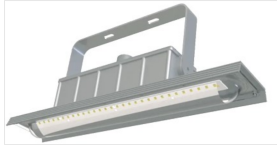


MACHINED HOUSING & 316 STAINLESS HARDWARE



HIGH EFFICIENCY DRIVERS

PRODUCT IMAGES



ORDERING INFO: LR-HLL-VL- 040- SO- 50-G05--SFT-

ELECTRICAL SPECIFICATIONS

1. Power Input: AC100-277V
2. AC180-528V (Option)
3. Power Factor: ≥97
4. THD: ≤16% @ full Load
5. 3/4" NPT Inlet

POWER
*10W - 210
15W - 215
*20W - 220
25W - 225
30W - 430
35W - 435
*40W - 440
45W - 445
50W - 450
55W - 455
*60W - 460

EFFICACY
130lm/w - SO
>145lm/w - HO

CCT
4000k-40
4500k-45
5000k-50
6000k-60
6500k-65

DISTRIBUTION
Clear 120° Lens - G05
Opaque 120° Lens - G20

OPERATING VOLTAGE
100-277VAC-Blank
180-528VAC-HV

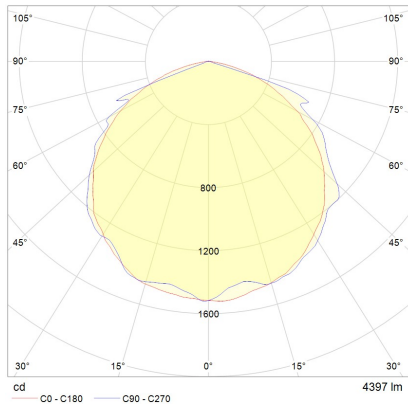
MOUNTING
Surface Mount - SFT
Pendant - PDT
(Site m not included)

DIMMING **
None - Blank
PWM-01
1-10V-02
VAR RES-03
DALI-04
LEDIM-05
TEDIM-06
DMX-07

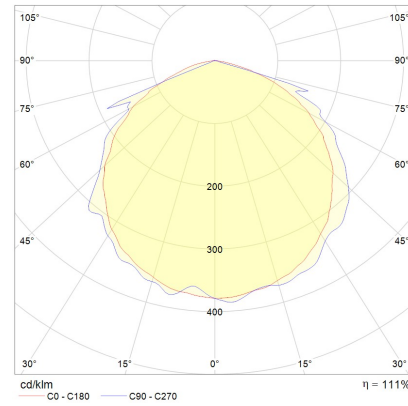
DIM Control: 0-5V, 0-10V, 1-10V, 0-20ma, 4-20ma, RS485, RS-232, PWM, RES, LEDIM, TEDIM, DMX512, DMX512/RDM, DALI, Custom
**** LEDRAYS offers the following dimming options (Please note not all DIM methods apply to a particular product)**

* Standard power configurations
 10W to 25W standard 600mm / 2ft length
 30W to 60W standard 1200mm / 4ft length

PHOTOMETRIC DISTRIBUTION



LR-HLL-VL-030 30W 120 Deg. Opaque



LR-HLL-VL-060 60W 120 Deg. Opaque

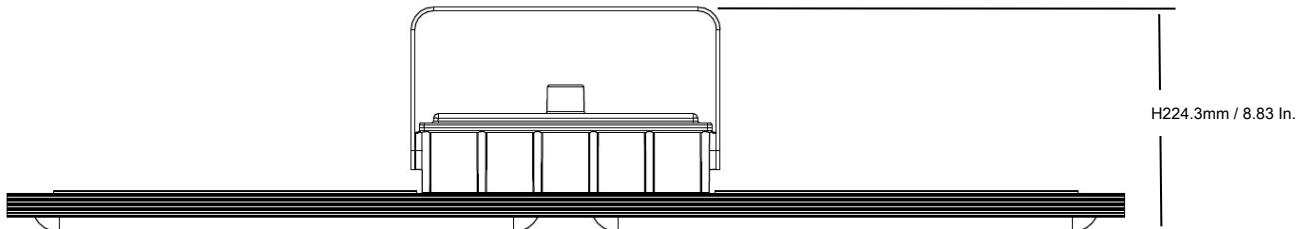
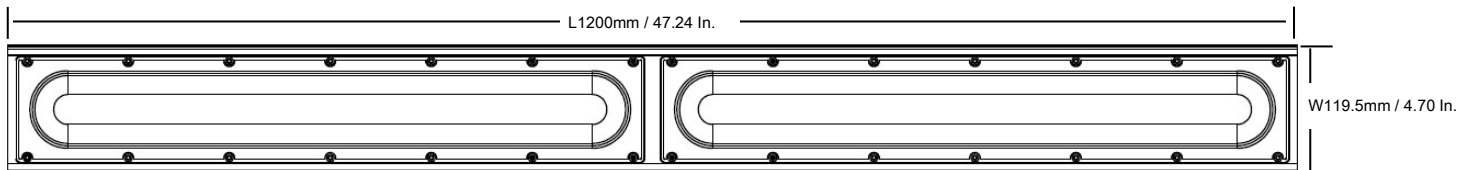
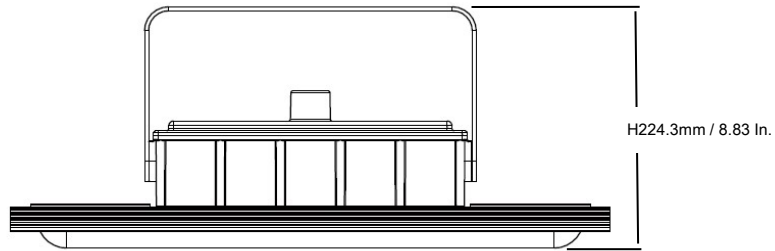
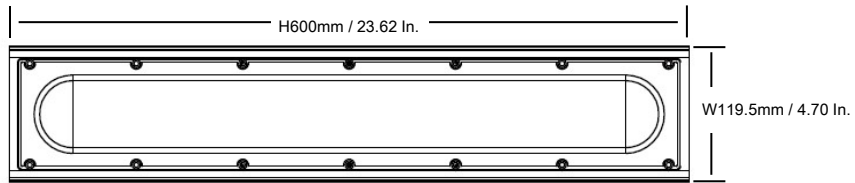




DIMENSIONS mm (± 1.1mm) WEIGHTS (± 0.4Kg)

POWER	DIMENSIONS	WEIGHT
10W to 25W	** L600mm x W119.5mm x H224.3mm	9.08Kg / 19.98lbs
30W to 60W	** L1200mm x W119.5mm x H224.3mm	15.25Kg / 33.55lbs

** With trunion bracket



The specifications in this brochure are representative and must not be interpreted as a guarantee of individual product performance and/or characteristics. LED RAYS Inc. has a policy of continuous advancements & development specifications may change without notice. Please contact your agent for updates.

514.484.8462
888 LEDLABS
(888.533.5227)

info@ledrays.com
www.ledrays.com