

RUGGEDIZED HAZARDOUS LOCATION LED LUMINAIRE



HLX- IL VL SERIES

DESCRIPTION

The HLX-IL VL Series high power hazardous location luminaires have been developed for harsh applications with expected exposure to flammable gases, vapours, combustible particles and ignitable fibres. Designed as a viable alternative to legacy gaseous luminaires providing substantially greater reliability, longevity and energy savings. The HLX-IL VL Series was engineered with an ultra robust housing with exceptional thermal capabilities which is very well suited for severe duty application in various industrial environments.

The HLX-IL VL hazardous location luminaire is manufactured of cast Aluminum with a very low copper content. The cast is further refined using 6 axis CNC precision machining providing very tight tolerances for the alignment of LED engines and associated support components. Housings are coated with a proprietary epoxy coating finish for high strength and durability in exceptionally harsh and corrosive applications. The HLX-IL VL Series are ABS compliant with a PDA recognition and fully sealed to NEMA 4x/IP66 standards allowing it to reliably operate in marine environments and can withstand most wash down procedures.

The HLX-IL VL Series is available in 9 power configurations within 2 housing packages and with UL844 classifications. Complete distribution options with 4 beam patterns provides for exceptional flexibility in coverage.

The HLX-IL VL Series LED luminaires with on board digital drivers with 5 way power protection provide stable long term performance, very low maintenance requirements and guard against light depreciation. All versions are equipped with Surge Protection Devices (SPD) providing multi level protection of power cycle disturbances. Proven performance under severe conditions with a robust design and best in class SMD LED engines. The LEDRAYS HLX-IL VL Series is designed with the same prodigious attention to detail as the entire line of hazardous location luminaires.

The HLX-IL VL Series offers exceptional value by benefiting from pragmatic cost reduction efforts including production line leveraging and by using cross platform components.



APPLICATIONS

- Mining/Extraction Sites
- Petrochemical
- Paints/Inks/Coatings Production
- Test Chambers
- Service Tunnels
- Grain Production Storage
- Pulp & Paper
- Water & Waste Water
- Offshore
- Food & Beverage Processing

CERTIFICATES & RATINGS
Class I, Division 1, Groups C,D
Class I, Division 2, Groups A, B, C, D
Class II, Division 1, Groups E, F, G
Class II, Division 2, Groups F,G
Class III
UL1598 and UL1598A
UL844
CSA C22.2 No.137/No.250.0
T4 Temperature Code
NEMA 4X, IP66
IK10
Marine and Wet Locations
ABS under PDA Provisions
IECEX
ATEX

HLX-IL VL SERIES SPECIFICATIONS

FIXTURE SERIES	POWER	LED TYPE	CCT	DISTRIBUTION	EXIT LUMEN RANGE	OPERATING VOLTAGE	IP RATING	DIMENSIONS
LR-HLX-IL-VL-020S-XX	20W	SMD (FLO)	4500K (4 000-6500K avail)	40 / 60 / 90 / 120 °	2400-2800lm	AC90-277V AC180-508V	IP66 NEMA 4X	L297.2 x W297.2 x D243.8mm L11.70 x W11.70 x D9.60 "
LR-HLX-IL-VL-040S-XX	40W	SMD (FLO)	4500K (4 000-6500K avail)	40 / 60 / 90 / 120 °	4800-5600lm	AC90-277V AC180-508V	IP66 NEMA 4X	L297.2 x W297.2 x D243.8mm L11.70 x W11.70 x D9.60 "
LR-HLX-IL-VL-060S-XX	60W	SMD (FLO)	4500K (4 000-6500K avail)	40 / 60 / 90 / 120 °	7200-8400lm	AC90-277V AC180-508V	IP66 NEMA 4X	L297.2 x W297.2 x D243.8mm L11.70 x W11.70 x D9.60 "
LR-HLX-IL-VL-080S-XX	80W	SMD (FLO)	4500K (4 000-6500K avail)	40 / 60 / 90 / 120 °	9600-11200lm	AC90-277V AC180-508V	IP66 NEMA 4X	L297.2 x W297.2 x D243.8mm L11.70 x W11.70 x D9.60 "
LR-HLX-IL-VL-100L-XX	100W	SMD (FLO)	4500K (4 000-6500K avail)	40 / 60 / 90 / 120 °	12000-14000lm	AC90-277V AC180-508V	IP66 NEMA 4X	L400 x W285 x D193mm L15.75 x W11.29 x D10.20 "
LR-HLX-IL-VL-120L-XX	120W	SMD (FLO)	4500K (4 000-6500K avail)	40 / 60 / 90 / 120 °	14400-16800lm	AC90-277V AC180-508V	IP66 NEMA 4X	L400 x W285 x D193mm L15.75 x W11.29 x D10.20 "
LR-HLX-IL-VL-150L-XX	150W	SMD (FLO)	4500K (4 000-6500K avail)	40 / 60 / 90 / 120 °	18000-21000lm	AC90-277V AC180-508V	IP66 NEMA 4X	L400 x W285 x D193mm L15.75 x W11.29 x D10.20 "
LR-HLX-IL-VL-180L-XX	180W	SMD (FLO)	4500K (4 000-6500K avail)	40 / 60 / 90 / 120 °	21600-25200lm	AC90-277V AC180-508V	IP66 NEMA 4X	L400 x W285 x D193mm L15.75 x W11.29 x D10.20 "
LR-HLX-IL-VL-220L-XX	*220W	SMD (FLO)	4500K (4 000-6500K avail)	40 / 60 / 90 / 120 °	26400-30800lm	AC90-277V AC180-508V	IP66 NEMA 4X	L400 x W285 x D193mm L15.75 x W11.29 x D10.20 "

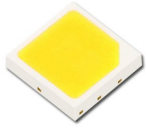
* Optional Power Configuration



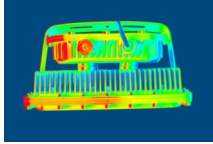
514 484-8462
888 LEDLABS
(888.533.5227)

info@ledrays.com
www.ledrays.com

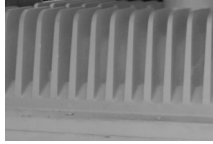
FEATURES



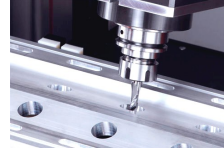
FLO SMD PACKAGE
20-180W



SUPERB THERMAL
PERFORMANCE



CUSTOM ETCHED AND EPOXY
COATED



CAST ALUMINIUM AND
CNC MACHINED HOUSING



HIGH EFFICIENCY
DRIVERS

PRODUCT IMAGES



ORDERING INFO: LR-HLX-IL-VL-100L-HO-50-G12--SFT--

ELECTRICAL SPECIFICATIONS

- Power Input: AC100-277V
- AC180-528V (Option)
- Power Factor: ≥95
- THD: ≤17% @ full Load

POWER
20W-020S
40W-040S
60W-060S
80W-080S
100W-100L
120W-120L
150W-150L
180W-180L
*220W-220L

EFFICACY
120lm/w-SO
140lm/w-HO

CCT
4000k-40
4500k-45
5000k-50
6000k-60
6500k-65

DISTRIBUTION
40° Lens-G04
60° Lens-G06
90° Lens-G09
120° Glassplate-G12

OPERATING VOLTAGE
100-277VAC-Blank
180-528VAC-HV

MOUNTING
Surface Mount-SFT

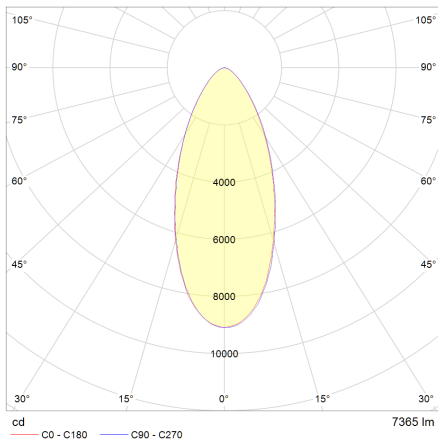
DIMMING **
None-Blank
PWM-01
1-10V-02
VAR RES-03
DALI-04
LEDIM-05
TEDIM-06
DMX-07

DIM Control: 0-5V, 0-10V, 1-10V, 0-20ma, 4-20ma, RS485, RS-232, PWM, RES, LEDIM, TEDIM, DMX512, DMX512/RDM, DALI, Custom
** LEDRAYS offers the following dimming options (Please note not all DIM methods apply to a particular product)

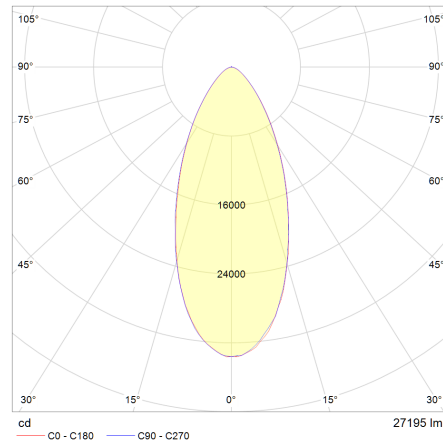
* Optional Power Configuration

GLASSPLATE=BOROSILICATE PLATE GLASS

PHOTOMETRIC DISTRIBUTION



LR-HLX-IL VL 60W (S) SMD/G06 LENS



LR-HLX-IL VL 220W (L) SMD/G06 LENS

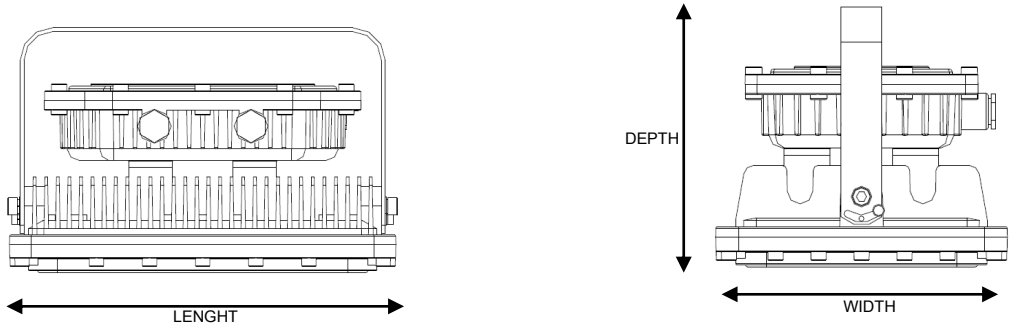


514 484-8462
888 LEDRAYS
(888.533.5227)

info@ledrays.com
www.ledrays.com

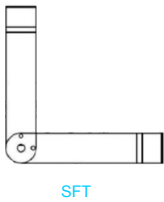


DIMENSIONS mm (± 1.1mm)



CONFIGURATION POWER	DIMENSIONS	WEIGHT
20-80W (S)	L297.2 x W297.2 x D243.8mm L11.70 x W11.70 x D9.60 "	18.94kg / 41.65lb
100-220W (L)	L400 x W285 x D193mm L15.75 x W11.29 x D10.20 "	20.3kg / 44.66lb

MOUNTING



SFT



The specifications in this brochure are representative and must not be interpreted as a guarantee of individual product performance and/or characteristics.
LED RAYS Inc. has a policy of continuous advancements & development specifications may change without notice. Please contact your agent for updates.