

CYLINDRICAL HAZARDOUS LOCATION LED LUMINAIRE

DESCRIPTION

The HLO VL Series mid and high power hazardous location luminaires have been developed for difficult applications with expected exposure to flammable gases, vapours, combustible particles and ignitable fibres.

Designed as a viable alternative to legacy gaseous luminaires providing substantially greater reliability, longevity and energy savings. The HLO VL Series was conceived in tune with the requirement for very low maintenance and offers exceptional performance in a value added package.

Workplace safety is paramount in dangerous environments and the HLO VL Series is available dropped down lenses and wire guards for added protection where direct physical contact with the fixture may occur. The HLO VL Series is available in 13 power configurations within 4 housing packages and with both C1D1 & C1D2 classifications. Complete distribution options with 5 beam patterns ranging from narrow to wide dispersion are available for exceptional flexibility in coverage.

The HLO VL hazardous location luminaire is constructed of low copper content cast Aluminum which is then precision machined and coated with a proprietary powder coating finish for high strength and durability in exceptionally harsh and corrosive applications. The HLO VL Series is ABS compliant with a PDA recognition and fully sealed to NEMA 4x/IP66 standards allowing it to reliably operate in marine environments and can withstand most wash down procedures.

The HLO VL Series LED luminaires with on board digital drivers with 4 way power protection provide stable performance and guard against light depreciation. All versions are equipped with Surge Protection Devices (SPD) providing multi layer protection of power cycle disturbances. Proven performance under severe conditions with a robust design and best in class SMD LED engines. The LEDRAYS HLO VL Series is designed with the same prodigious attention to detail as the entire line of hazardous location luminaires.

The HLO VL Series offers exceptional value by benefiting from pragmatic cost reduction efforts including production line leveraging and by using cross platform components.

APPLICATIONS

- Mining/Extraction Sites
- Petrochemical
- Paints/Inks/Coatings Production
- Test Chambers
- Service Tunnels
- Grain Production Storage
- Pulp & Paper
- Water & Waste Water
- Offshore
- Food & Beverage Processing



CERTIFICATES & RATINGS

Class I, Division 1, Groups C,D (TYPE B HOUSING ONLY)
 Class I, Division 2, Groups A, B, C, D (TYPE A & B HOUSING)
 Class II, Division 1, Groups E,F,G (TYPE B HOUSING ONLY)
 Class II, Division 2, Groups ,F,G (TYPE B HOUSING ONLY)
 Class III (TYPE B HOUSING ONLY)
 UL1598 and UL1598A
 UL844
 CSA C22.2 No.137/No.250.0
 T3 Temperature Code (TYPE A HOUSING C1D2 ONLY)
 T4 Temperature Code (TYPE B HOUSING C1D1 ONLY)
 NEMA 4X, IP66
 IK10
 Marine and Wet Locations
 ABS under PDA Provisions
 IECEX
 ATEX

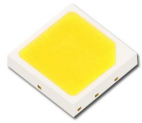
HLO VL SERIES SPECIFICATIONS

FIXTURE SERIES	POWER	LED TYPE	CCT	DISTRIBUTION	EXIT LUMEN RANGE	OPERATING VOLTAGE	IP RATING	DIMENSIONS
LR-HLO-VL-020A-XX	20W	SMD (FLO)	4500K (4000-6500K avail)	40/60°/90/120 or °140°	2600-2800lm	AC90-277V AC180-508V	IP66 (A HOUSING)	** DØ228.6 x L231.1mm DØ9.2 x L9.1"
LR-HLO-VL-040A-XX	40W	SMD (FLO)	4500K (4000-6500K avail)	40/60°/90/120 or °140°	5200-5600lm	AC90-277V AC180-508V	IP66 (A HOUSING)	** DØ228.6 x L231.1mm DØ9.2 x L9.1"
LR-HLO-VL-080A-XX	60W	SMD (FLO)	4500K (4000-6500K avail)	40/60°/90/120 or °140°	7800-8400lm	AC90-277V AC180-508V	IP66 (A HOUSING)	** DØ228.6 x L231.1mm DØ9.2 x L9.1"
LR-HLO-VL-080A-XX	80W	SMD (FLO)	4500K (4000-6500K avail)	40/60°/90/120 or °140°	10400-11200lm	AC90-277V AC180-508V	IP66 (A HOUSING)	** DØ269.2 x L165.1mm DØ10.6 x L6.5"
LR-HLO-VL-100A-XX	100W	SMD (FLO)	4500K (4000-6500K avail)	40/60°/90/120 or °140°	13000-14000lm	AC90-277V AC180-508V	IP66 (A HOUSING)	** DØ370.9 x L.289.6mm DØ 14.6 x L11.4"
LR-HLO-VL-120A-XX	120W	SMD (FLO)	4500K (4000-6500K avail)	40/60°/90/120 or °140°	15600-16800lm	AC90-277V AC180-508V	IP66 (A HOUSING)	** DØ370.9 x L.289.6mm DØ 14.6 x L11.4"
LR-HLO-VL-150A-XX	150W	SMD (FLO)	4500K (4000-6500K avail)	40/60°/90/120 or °140°	19500-21000lm	AC90-277V AC180-508V	IP66 (A HOUSING)	** DØ370.9 x L.289.6mm DØ 14.6 x L11.4"
LR-HLO-VL-200A-XX	200W	SMD (FLO)	4500K (4000-6500K avail)	40/60°/90/120 or °140°	26000-28000lm	AC90-277V AC180-508V	IP66 (A HOUSING)	** DØ370.9 x L.289.6mm DØ 14.6 x L11.4"
LR-HLO-VL-080B-XX	60W	SMD (FLO)	4500K (4000-6500K avail)	40/60°/90/120 or °140°	7800-8400lm	AC90-277V AC180-508V	IP66 (B HOUSING)	** DØ406.4 x L340.4mm DØ16.0 x L13.4"
LR-HLO-VL-080B-XX	80W	SMD (FLO)	4500K (4000-6500K avail)	40/60°/90/120 or °140°	10400-11200lm	AC90-277V AC180-508V	IP66 (B HOUSING)	** DØ406.4 x L340.4mm DØ16.0 x L13.4"
LR-HLO-VL-100B-XX	100W	SMD (FLO)	4500K (4000-6500K avail)	40/60°/90/120 or °140°	13000-14000lm	AC90-277V AC180-508V	IP66 (B HOUSING)	** DØ406.4 x L340.4mm DØ16.0 x L13.4"
LR-HLO-VL-120B-XX	120W	SMD (FLO)	4500K (4000-6500K avail)	40/60°/90/120 or °140°	15600-16800lm	AC90-277V AC180-508V	IP66 (B HOUSING)	** DØ406.4 x L340.4mm DØ16.0 x L13.4"
LR-HLO-VL-150B-XX	150W	SMD (FLO)	4500K (4000-6500K avail)	40/60°/90/120 or °140°	19500-21000lm	AC90-277V AC180-508V	IP66 (B HOUSING)	** DØ406.4 x L340.4mm DØ16.0 x L13.4"

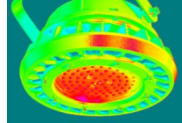
* Optional Distribution Configurations
 ** Without Trunnion Mount



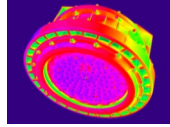
FEATURES



EMC SMD PACKAGE
20-200W (A & B HOUSING)



SUPERIOR THERMAL
PERFORMANCE HOUSING A



SUPERIOR THERMAL
PERFORMANCE HOUSING B



MACHINED HOUSING &
316 STAINLESS HARDWARE



HIGH EFFICIENCY
DRIVERS

PRODUCT IMAGES

A HOUSING C1D2

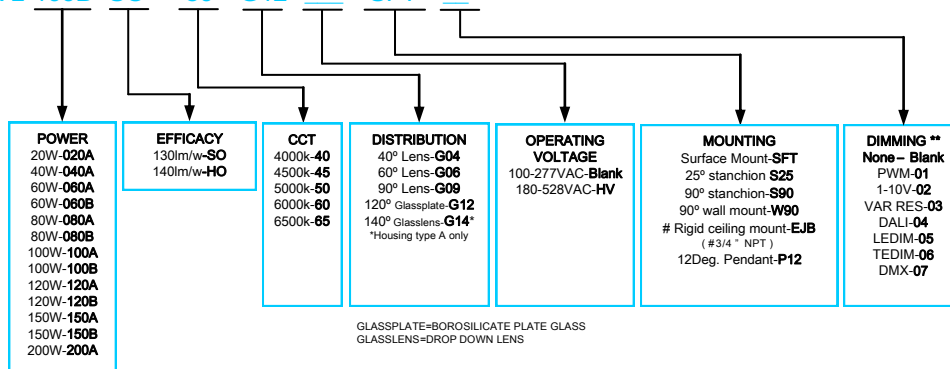
B HOUSING C1D1



ORDERING INFO: LR-HLO-VL-100B- SO- 50-G12-- -SFT-

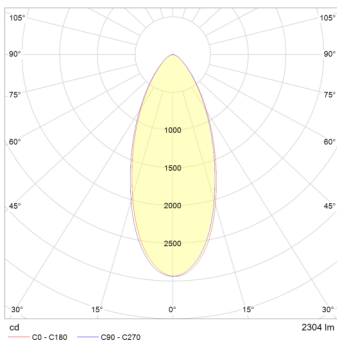
ELECTRICAL SPECIFICATIONS

1. Power Input: AC100-277V
2. AC180-528V (Option)
3. Power Factor: ≥95
4. THD: ≤17% @ full Load

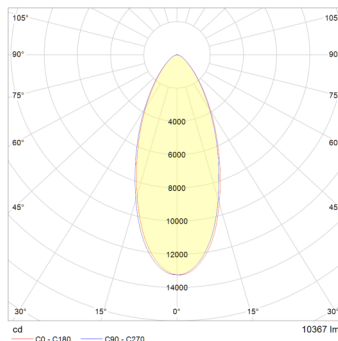


DIM Control: 0-5V, 0-10V, 1-10V, 0-20ma, 4-20ma, RS485, RS-232, PWM, RES, LEDIM, TEDIM, DMX512, DMX512/RDM, DALI, Custom
**** LEDDRAYS offers the following dimming options (Please note not all DIM methods apply to a particular product)**

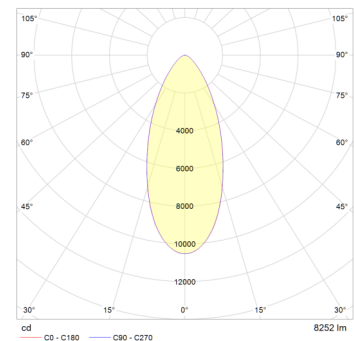
PHOTOMETRIC DISTRIBUTION



LR-HLO-VL020A 20W SMD/ G06 GLASSLENS 60°



LR-HLO-VL080A 80W SMD/ G06 GLASSLENS 60°



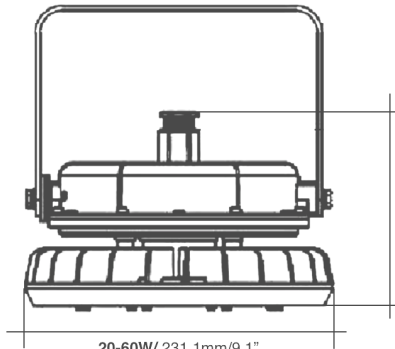
LR-HLO-VL060B 60W SMD/ G06 GLASSLENS 60°





DIMENSIONS mm (± 1.1mm)

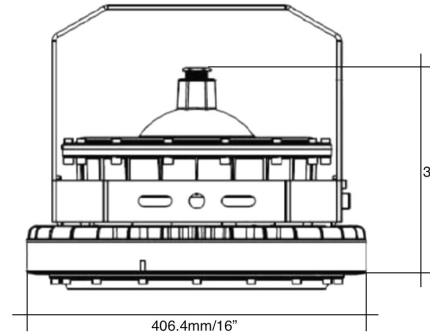
**A HOUSING
C1D2**



20-60W/ 231.1mm/9.1"
80W/ 269.2mm/10.6"
100-200W/ 370.9mm/14.6"

20-60W/ 228.6mm/9"
80W/ 165.1mm/6.5"
100-200W/ 289.6mm/11.4"

**B HOUSING
C1D1**

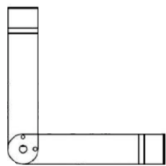


406.4mm/16"

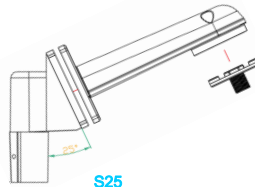
340.4mm/13.4"

CONFIGURATION	POWER	DIMENSIONS
A HOUSING C1D2 Length with Trunnion Mount	20-60W	355.6mm/14.0 "
	80W	393.7mm/15.5 "
	100-200W	477.5mm/18.8 "
B HOUSING C1D1 Length with Trunnion Mount	60-150W	683.3mm/26.9 "

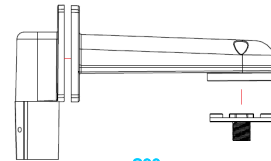
MOUNTING



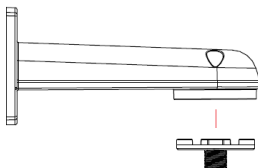
SFT



S25



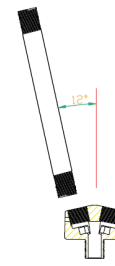
S90



W90



EJB



P12



The specifications in this brochure are representative and must not be interpreted as a guarantee of individual product performance and/or characteristics. LED RAYS Inc. has a policy of continuous advancements & development specifications may change without notice. Please contact your agent for updates.

514 484-8462
888 LEDLABS
(888.533.5227)

info@ledrays.com
www.ledrays.com