

HAZLOC & HARSH ENVIRONMENT LED LUMINAIRES

NEW RELEASE

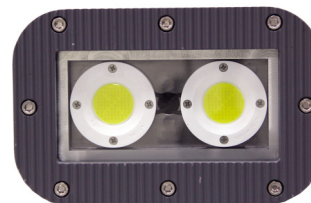
DESCRIPTION

The Compact LR-HAC AC LED series of UL844 products have been engineered to offer stable and reliable operation in both hazardous and harsh conditions with expected exposure to flammable gases, vapours, combustible dusts and ignitable fibres. Small form factor high purity aluminum alloy housings are CNC machined to precise tolerances offering exceptional thermal management in extreme atmospheres.

The innovative driverless design and exceptional thermal efficiency allows the Compact HAC series of luminaires to withstand shock and vibration effortlessly and function in exceptionally high temperature environments with temperatures capabilities of 100°C/212°F and L70 of >54,000hrs for 55°C ambient. Furthermore operation in high temperature environments does not require the traditional and costly remote driver assemblies, components and associated wiring.

The Compact HAC LED luminaires feature very low maintenance requirements without experiencing the traditional failures of conventional DC driver designs. Specially coated with a proprietary polyester-epoxy finish with standard IP68/Nema 6P ingress protection make the HAC series suitable for deployment in highly corrosive and demanding conditions. Fluorocarbon coatings are available as an option for applications requiring a specialized surface finish.

Numerous mounting options with available retrofit kits for commonly used legacy HID and incandescent fixtures allow for even greater application versatility and simple installation. Available in a 40W power with COB light engines which produce >100lm/w in either 3000K, 4000K or 5000K CCT with 110° beam distribution offering superior and uniform coverage. Input voltage can be specified as either 24V, 120V, 277V or 480VAC, additionally the imbedded thermal rollback circuitry assures long term reliability and performance.



APPLICATIONS

- Petrochemical
- Paint & Coatings
- Pulp & Paper
- Water & Waste Water
- Foundries
- Robotic Welding
- Glass Flow
- Test Chambers
- Oil & Gas
- Grain Production & Storage
- Offshore Platform



LISTED:

NFPA 70 (UL844) Class I, Division 2
Group A, B, C, D
NFPA 70 (UL60079)
Zone 1, AEx d IIB+H2
Zone 21, AEx tb IIIC
UL1598

HAC COMPACT SERIES SPECIFICATIONS

FIXTURE SERIES	POWER	LED TYPE	CCT	DISTRIBUTION	EXIT LUMEN	OPERATING VOLTAGE	IP RATING	DIMENSIONS
LR-HAC-COMP40W-XX-XX-XX-XX	40W	AC Direct COB	4000K (3000-5000K avail)	110Deg. Symmetrical	4,000lm	24V-120V 277-480VAC	IP67/68	L203 x W130 x H115mm* L7.90 x 5.11 x H4.52"

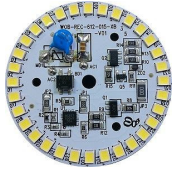
* Not including Cable Entry Gland & Support



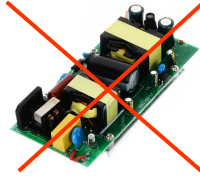
T: 514 484-8462
TF: 888 LEDLABS
(533-5227)

info@ledrays.com
www.ledrays.com

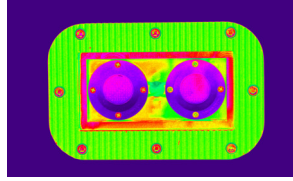
FEATURES



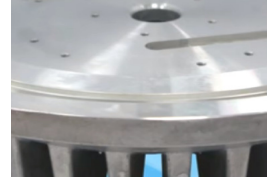
SMD/COB or DOB LED ENGINES



DRIVERLESS DESIGN



EXCEPTIONAL THERMAL PERFORMANCE

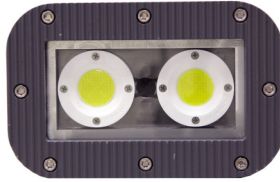


ALUMINIUM ALLOY CNC MACHINED HOUSING



HIGH TEMPERATURE CAPABLE

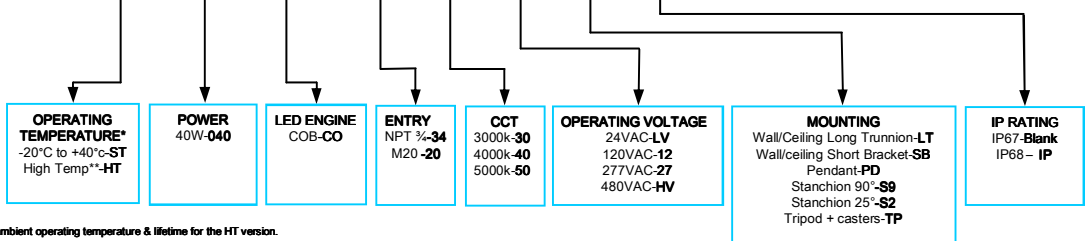
PRODUCT IMAGES



PRODUCT CODE: LR-HAC-COMP-ST-040-CO-34-50-12-LT-

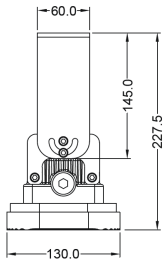
ELECTRICAL SPECIFICATIONS

1. Power Input: AC120 or AC277V 50/60Hz
2. AC24V or AC480V (Option)
3. Power Factor: ≥90
4. THD: ≤20% @ full Load
5. Entry NPT 3/4" or M20 thread

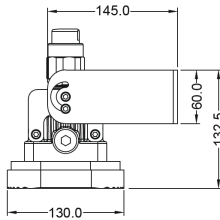


**Please consult a LEDRAYS engineer to define the maximum acceptable ambient operating temperature & lifetime for the HT version.
 DIM Control: 0-5V, 0-10V, 1-10V, 0-20ma, 4-20ma, RS485, RS-232, PWM, RES, LEDIM, TEDIM, DMX512, DALI, Custom
 LEDRAYS offers the following dimming options (Please note not all DIM methods apply to a particular product)

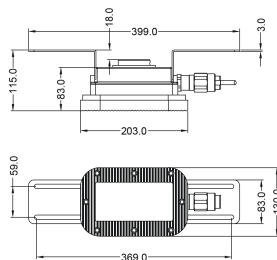
DIMENSIONS (mm) / WEIGHTS 40W / 3.6kg/7.92lbs



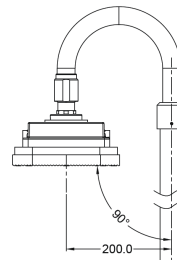
Long Trunnion



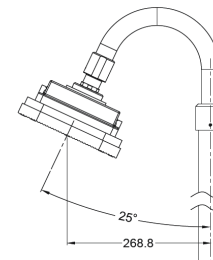
Short Bracket



Stanchion 90°



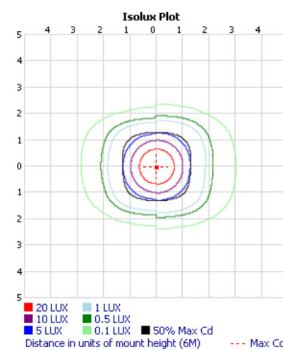
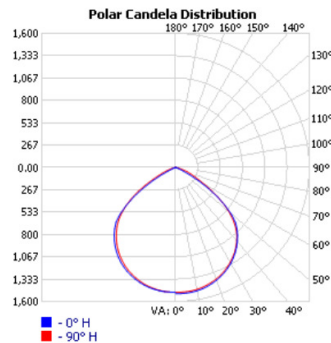
Stanchion 25°



Tripod

PHOTOMETRIC DISTRIBUTION

40W / COB 5000K



The specifications in this brochure are representative and must not be interpreted as a guarantee of individual product performance and/or characteristics. LEDRAYS Inc. has a policy of continuous advancements & development specifications may change without notice. Please contact your agent for updates.

T: 514 484-8462
 TF: 888 LEDLABS
 (533-5227)

info@ledrays.com
www.ledrays.com