

LED HAZLOC SAFETY FIXTURE

XPG Platform



LED RAYS
MASTERING LIGHT

HLX-IL Series

NEW

Features

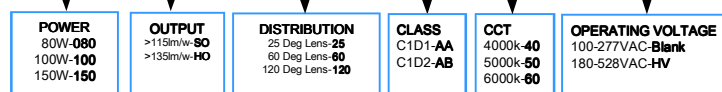
- Hazardous & Harsh Duty Safety Fixtures
- Efficacy up to 135lm/w
- 25°/60°/120° Distribution Options
- IP66 Ingress Protection
- High Power CREE™ LED
- C1D1 & C1D2 Versions
- Copper Free Aluminum Housing
- -40°C/+60°C Operating Temperature range
- Surface or Pendant Mounting
- 102,000hrs L70 at 25°C Ambient



Product Specifications

| Model | Power | LED Type | CCT | Efficacy | Luminous Flux | Beam Angle | IP Level |
|----------------|-------|----------|-------|--------------|----------------|--------------|----------|
| LR-HLX-IL80v2 | 80W | XPG | 5000K | >115/135lm/W | >9200/10800lm | 25°/60°/120° | IP66 |
| LR-HLX-IL100v2 | 100W | XPG | 5000K | >115/135lm/W | >11500/13500lm | 25°/60°/120° | IP66 |
| LR-HLX-IL150v2 | 150W | XPG | 5000K | >115/135lm/W | >17250/20250lm | 25°/60°/120° | IP66 |

ORDERING CODE: LR-HLX-IL 100v2 -SO- 60-AA-50- --



ELECTRICAL SPECIFICATIONS

1. Power Input: AC100-277V
2. AC180-508V (Option)
3. Power Factor: ≥98
4. THD: ≤15% @ full Load
5. Dimming: Yes optional
6. Inlet NPT 3/4"

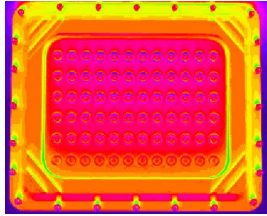
LISTED

Class I, Div. 1, Groups C,D
 Class I, Div. 2, Group A,B,C,D
 Class II, Div. 2, Groups F,G
 Class III
 Enclosed & Gasketed
 Wet Locations / Type 4X / IP 66
 UL-1598/8750 for LED Lighting
 UL-1598 (A)
 UL-844 and CSA C22.2 for Hazardous Locations
 DLC 4.0 Premium
 T4A Temp

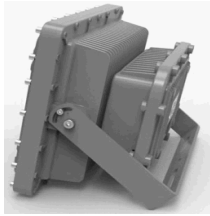
Product Specifications



XPG Platform
CREE™ LED



Exceptional Thermal
Management



Separate
Driver Housing



Distribution Options



High Performance
Digital CC Driver

XPG Platform

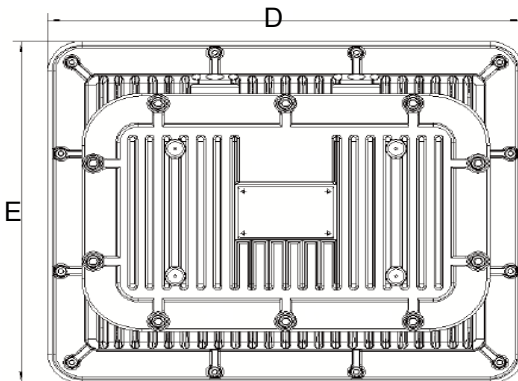
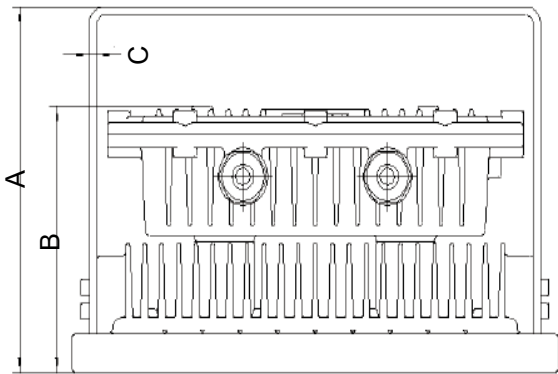
>135lm/w

Distribution Options

Copper Free Housing

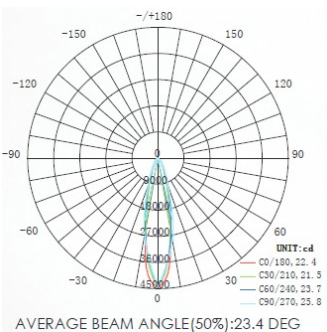
Silicon Gaskets
& SS Hardware

Surface or Pendant Mounting

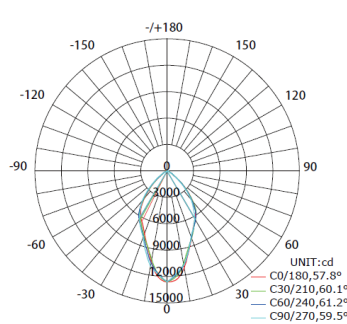


| Dimensions ALL | |
|----------------|--------|
| A | mm 218 |
| B | mm 160 |
| C | mm 4 |
| D | mm 336 |
| E | mm 280 |

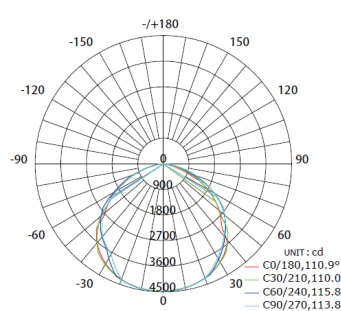
Average Beam Angle (50%) 25 Deg



60 Deg



120 Deg



| Model | Weight kg/lbs |
|----------------|----------------|
| LR-HLX-IL80v2 | 8.2kg/18.1lbs |
| LR-HLX-IL100v2 | 9.8kg/21.6lbs |
| LR-HLX-IL150v2 | 12.4kg/27.3lbs |

The specifications in this brochure are representative and must not be interpreted as a guarantee of individual product performance and/or characteristics.
LEDRAYS Inc. has a policy of continuous advancements & development specifications may change without notice. Please contact your rep for updates.