

CYLINDER LED LUMINAIRES

CHT SERIES

DESCRIPTION

The CHT Series LED Luminaires features a new Direct Mounting Heat Pipe (DMHP) patent pending structure for exceptional thermal efficiency. Engineered to address the requirements of large interior spaces such as convention halls, rail stations, airport terminals and other large public areas with pristine quality lighting.

Available in two distribution patterns with Mid and High power configurations to accommodate most applications the CHT LED luminaires are pendant or suspended capable and feature a highly corrosion resistant protective polyester powder coating. Long term reliability is achieved via the use of advanced materials, electronics and exceptional engineering. Efficacies of up to >110lm/w are available with either CREE™ or Osram™ LED engines.

Using innovative techniques to greatly reduce thermal resistance the CHT design controls light loss caused by traditional heatsink thermal limitations. Electrical and optical systems represent benchmark efficiencies for stable product life performance. The optical system employs a new polymer reflector which provides superior light transmission efficiency (LTE) and anti glare fascias deliver uncompromised and uniform distribution.

The CHT Series LED luminaire presents an aesthetic smooth surface with identical cylinder diameters for different power levels. Additionally the thermal pathways are routed away from light emitting engines and optics allowing the fixture to remain clean and dust free, eliminating maintenance requirements and promoting to a long product life.

The CHT Series LED luminaires offer on board digital drivers with 3 way power protection and optional multi dimming input. Constant current feedback provides stable performance and guards against lumen depreciation.



APPLICATIONS

- Large Public Areas
- Airport Terminals
- Indoor Amusement/Playgrounds
- Rail Stations
- Concert Venues
- Convention Centers

CHT SERIES SPECIFICATIONS

FIXTURE SERIES	POWER	LED TYPE	CCT	DISTRIBUTION	EXIT LUMEN RANGE	OPERATING VOLTAGE	DIMENSIONS*
LR-CHT-80W-XX-XX	80W	40 x CREE™ or 72 x Osram™ SMD	4500K (4 100-6500K avail)	30° or 50° Symmetrical	7,600-8,800lm	AC90-277V AC180-508V	Ø230x240mm Ø9.05 "x9.45 "
LR-CHT-120W-XX-XX	120W	60 x CREE™ or 108 x Osram™ SMD	4500K (4 100-6500K avail)	30° or 50° Symmetrical	11,400-13,200lm	AC90-277V AC180-508V	Ø230x350mm Ø9.05 "x13.77 "

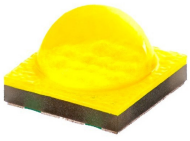
* Length not including hook



T: 514.484.8462
TF: 888.LED.LABS
(533.5227)

info@ledrays.com
www.ledrays.com

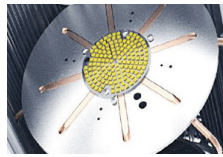
FEATURES



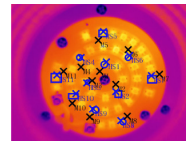
High Performance LED Engines



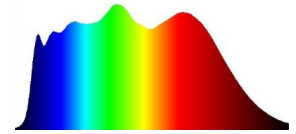
Polymer Reflectors



DMHP Technology



Exceptional Thermal Performance



80-90 CRI AVR

PRODUCT IMAGES

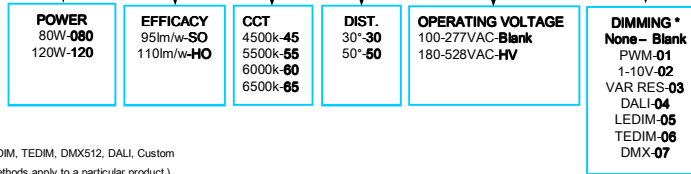


Hook/Pendant Mount

ORDERING INFO: LR-CHT — 080 — SO — 45 — 30 — — —

ELECTRICAL SPECIFICATIONS

- Power Input: AC100-277V
- AC180-528V (Option)
- Power Factor: ≥97
- THD: ≤17% @ full Load
- Standard 2M/6ft cord length

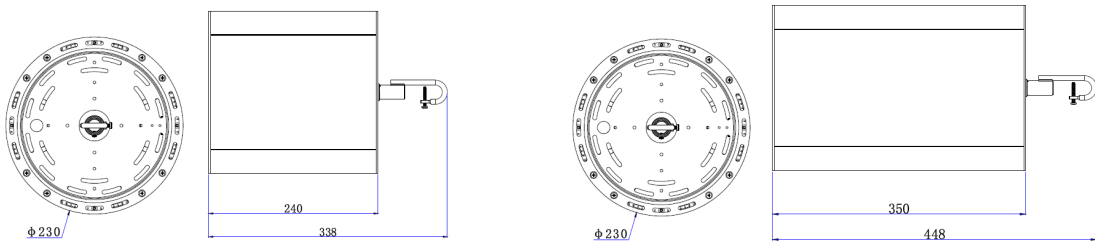


DIM Control: 0-5V, 0-10V, 0-20ma, 4-20ma, RS485, RS-232, PWM, RES, LEDIM, TEDIM, DMXS12, DALI, Custom
 * LEDRAYS offers the following dimming options (Please note not all DIM methods apply to a particular product)

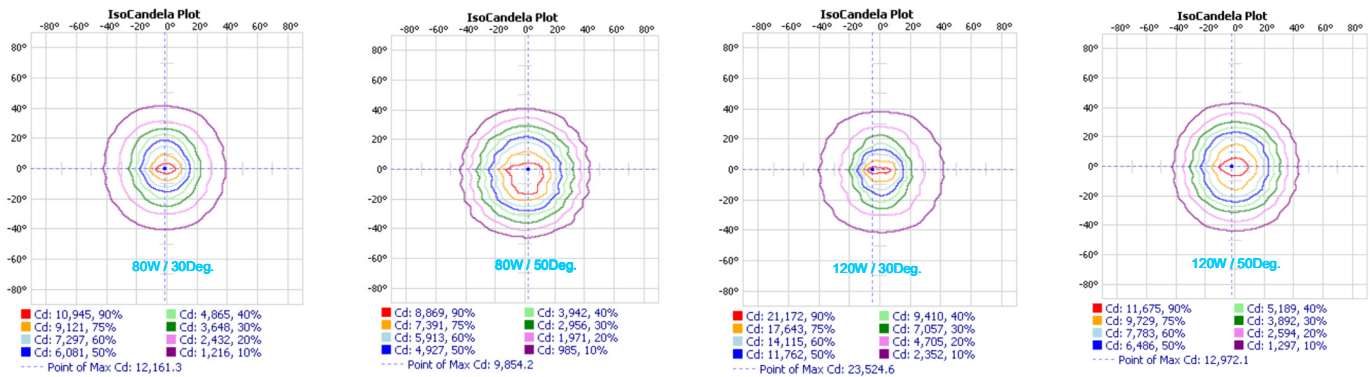
DIMENSIONS / WEIGHTS

80W (4.1kg/9.02lbs)

120W (5.35kg/11.77lbs)



PHOTOMETRIC DISTRIBUTION



The specifications in this brochure are representative and must not be interpreted as a guarantee of individual product performance and/or characteristics. LEDRAYS Inc. has a policy of continuous advancements & development specifications may change without notice. Please contact your agent for updates.

T: 514.484.8462
 TF: 888.LED.LABS
 (533.5227)

info@ledrays.com
www.ledrays.com