



UPDATED

Features

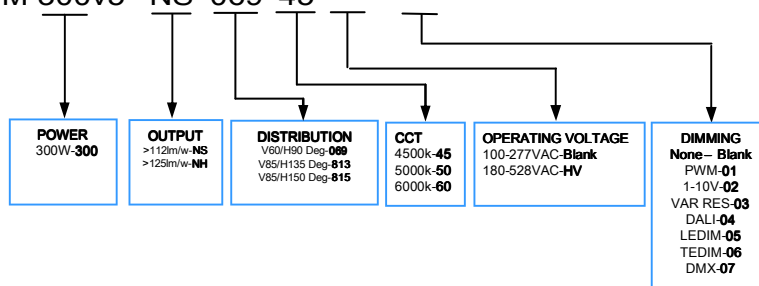
- Updated Version of the Highly Acclaimed HPFM V4 Series
- Unique Heatsink for Unparalleled Thermal Capability
- Nichia™ or CREE™ Structured High Power LED Arrays.
- Fully Modular Design with Aluminium Driver Enclosure
- Lensing Flexibility For Optimized Photometric Distribution
- 34000lm with >112lm/w Efficacy at 4500K
- Twin Digital Driver with 5 way I²O Protection
- Harsh Environment Applications
- 6063 Aluminium Extrusion & 316 Stainless Hardware
- Highly Customizable for Application Specific Performance
- 108,000hrs L70 at 25°C Ambient



Product Specifications

Model	Power	LED Type	CCT	Efficacy	Luminous Flux	Beam Angle	IP Level
LR-HPFM-310-v5NS69	310W	Nichia™	4500-6500K	≥112lm/W	31500-34500lm	V60°/H90°	IP65 Option IP68
LR-HPFM-310-v5NS813	310W	Nichia™	4500-6500K	≥112lm/W	31500-34500lm	V85°/H135°	IP65 Option IP68
LR-HPFM-310-v5NS815	310W	Nichia™	4500-6500K	≥112m/W	31500-34500lm	V85°/H150°	IP65 Option IP68

ORDERING CODE: LR-HPFM 300v5 -NS-069-45- --- ---



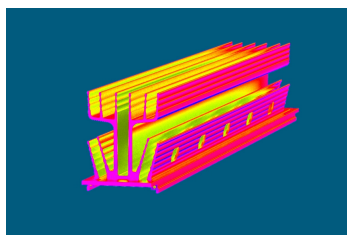
Electrical Specifications

1. Power Input: AC100-277V
2. AC180-508V (Option)
3. Power Factor: ≥96
4. THD: ≤14% @ full Load
5. Dimming: Yes optional
6. CRI 70-80 & Option 90

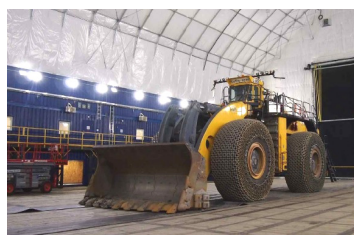
Product Specifications



Fully Serviceable Modular Design



Exceptional Thermal Performance



Engineered for Harsh Environments



Twin Digital Drivers

High Power Nichia™ Emitters

FEA Designed Heatsink

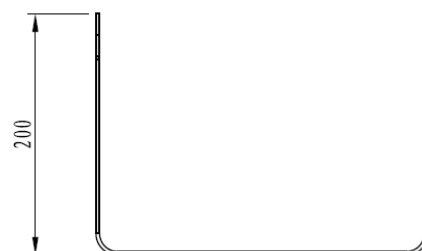
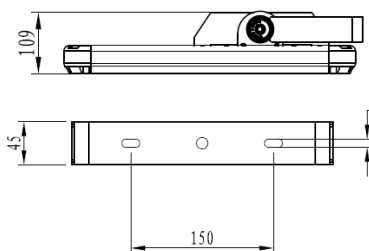
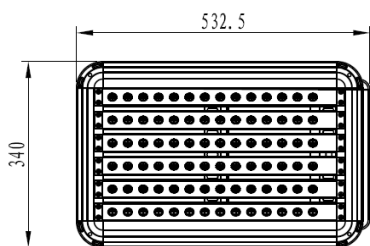
Distribution Options

Dual Driver Redundancy

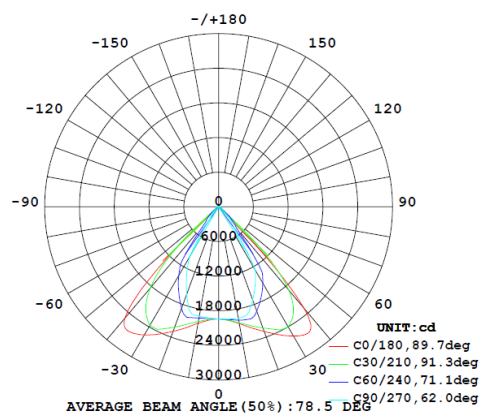
AL 6063-T6 Structure

Aluminium Driver Enclosure

Dimensions mm (Weight 10.6Kg ± 0.2Kg)



Typical Luminous Intensity Distribution (V60/H90 Deg.)



The specifications in this brochure are representative and must not be interpreted as a guarantee of individual product performance and/or characteristics. LEDRAYS Inc. has a policy of continuous advancements & development specifications may change without notice. Please contact your rep for updates.