

Features

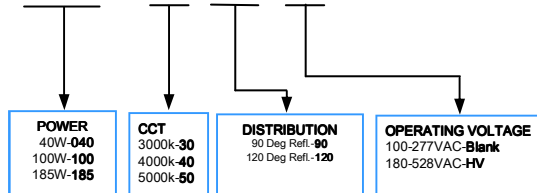
- Hazardous & Harsh Duty Fixtures
- Efficacy >100lm/w
- 90° or 120° Distribution Options
- IP68 Ingress Protection
- Bridgelux™ LED
- C1D2 Version
- Cast Aluminum Housing
- -30°C/+50°C Operating Temperature Range
- 304/316 Stainless Hardware
- 105,000hrs L70 at 25°C Ambient



Product Specifications

Model	Power	LED Type	CCT	Efficacy	Luminous Flux	Beam Angle	IP Level
LR-HLV-40v1	40W	Bridgelux™	3000-5000K	>100lm/W	>4000lm	90°/120°	IP68
LR-HLV-100v1	100W	Bridgelux™	3000-5000K	>100lm/W	>10000lm	90°/120°	IP68
LR-HLV-185v1	185W	Bridgelux™	3000-5000K	>100lm/W	>18500lm	90°/120°	IP68

ORDERING CODE: LR-HLV- 100v1 — 50 — 120 — --



ELECTRICAL SPECIFICATIONS

1. Power Input: AC100-277V
2. AC180-508V (Option)
3. Power Factor: ≥98
4. THD: ≤17% @ full Load
5. Inlet NPT 3/4"

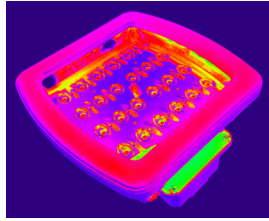
LISTED

Class I, Div. 2, Group A,B,C,D
UL-844 Luminaires for use in Hazardous
(Classified) Locations
CSA C22.2 No. 137-M1981 Electric Luminaires
for use in Hazardous Locations

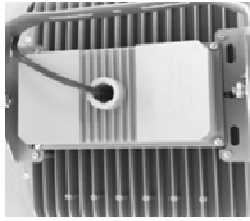
Product Specifications



BRG Platform
Mid Power LED



Exceptional Thermal
Management



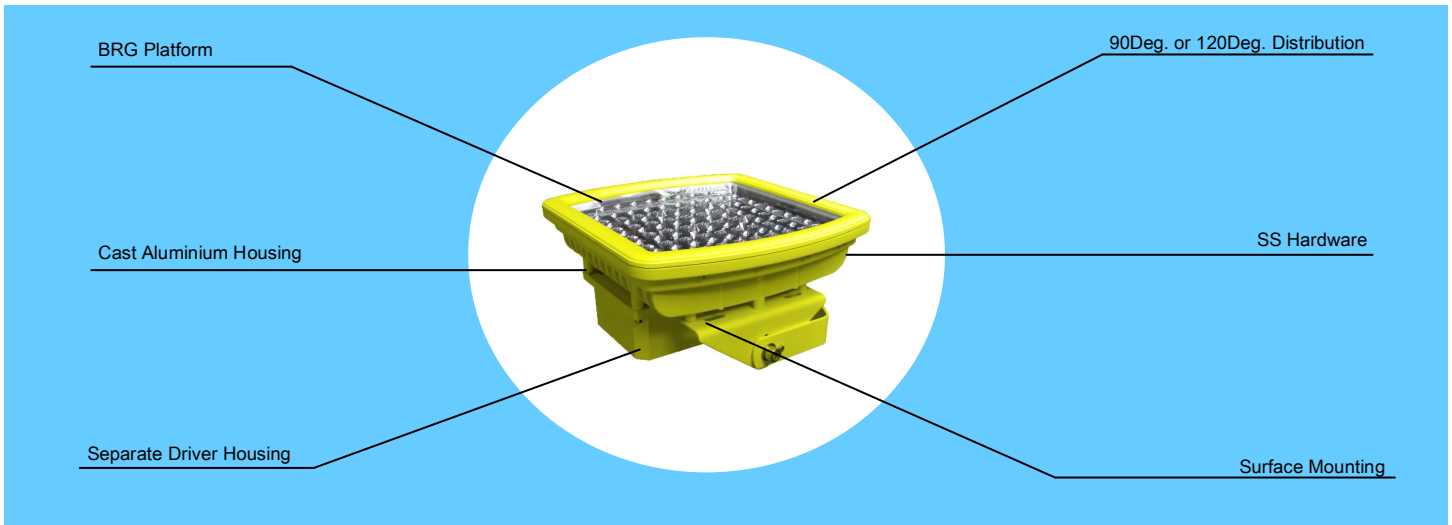
Separate
Driver Housing



Distribution Options

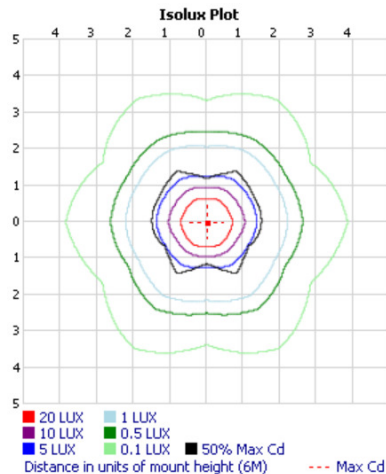
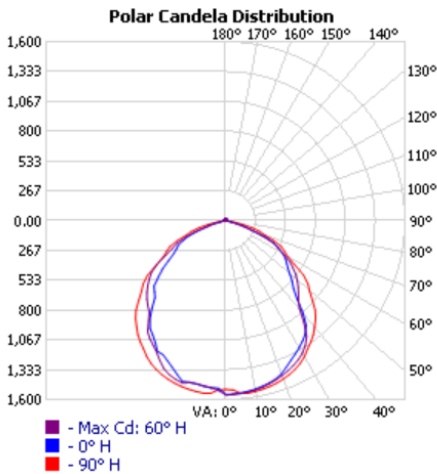


Digital CC Driver



Model	Length mm	Width mm	Height mm	Weight
LR-HLV-40v1	210	210	280	4.1kg/9.02lb
LR-HLV-100v1	310	310	185	7.5kg/16.5lb
LR-HLV-185v1	410	410	195	12kg/26.4lb

Average Beam Angle HLV 40W/120 Deg



The specifications in this brochure are representative and must not be interpreted as a guarantee of individual product performance and/or characteristics.

LEDRAYS Inc. has a policy of continuous advancements & development specifications may change without notice. Please contact your rep for updates.