

# LED

## COMPACT HAZLOC FIXTURE

### XPG Platform



# LED RAYS

MASTERING LIGHT

## HLO Series

PRELIMINARY

### Features

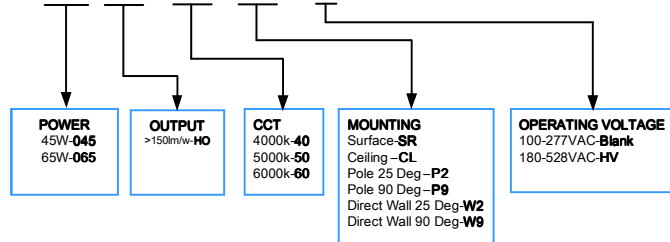
- Compact Hazardous Location Fixtures
- Efficacy up to 150lm/w
- IP66 Ingress Protection
- High Power Philips™ LED
- Copper Free Aluminum Housing
- -40°C/+55°C Operating Temperature range
- Flexible Mounting Options
- 304/316 Stainless Hardware
- 80,000hrs L70 at 25°C Ambient



### Product Specifications

Model	Power	LED Type	CCT	Efficacy	Luminous Flux	Beam Angle	IP Level
LR-HLO-45v1	45W	Luxeon	5000K	>150lm/W	>6750lm	110°	IP66
LR-HLO-65v1	65W	Luxeon	5000K	>150lm/W	>9750lm	110°	IP66

ORDERING CODE: LR-HLOv1 065-HO-50-CL--



### ELECTRICAL SPECIFICATIONS

1. Power Input: AC100-277V
2. AC180-508V (Option)
3. Power Factor: ≥96
4. THD: ≤19% @ full Load
5. Dimming: No
6. Inlet NPT 3/4" / 1 1/4" & 1 1/2"

### LISTED

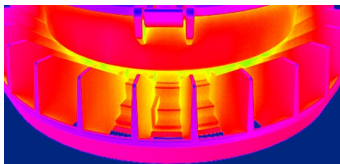
Class I, Div. 2, Group A,B,C,D  
 Class II, Div. 1&2, Groups E, F,G  
 Class III  
 Enclosed & Gasketed  
 Wet Locations / Type 4X / IP 66  
 UL-844 and CSA C22.2 for Hazardous Locations

# LED COMPACT HAZLOC FIXTURE

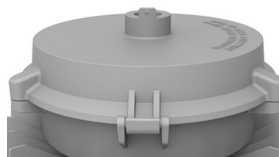
## Product Specifications



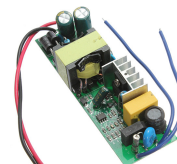
XPG Platform  
CREE™ LED



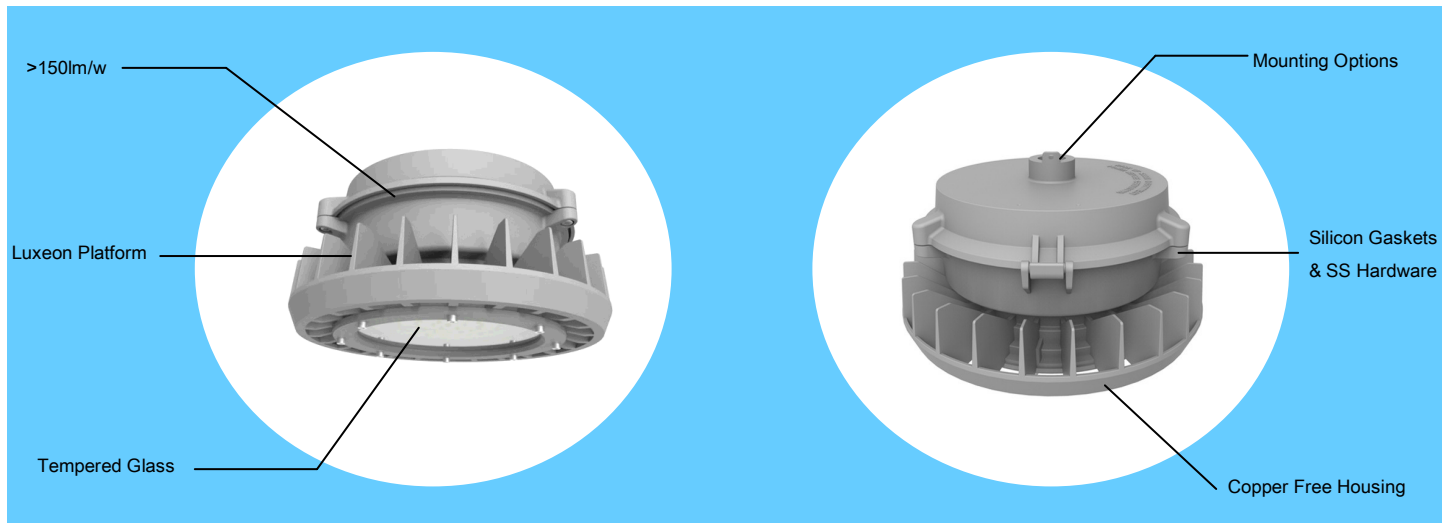
Exceptional Thermal  
Management



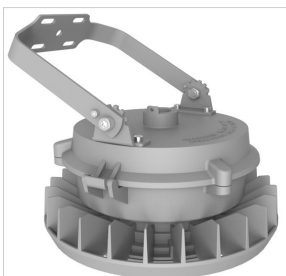
Separate  
Driver Housing



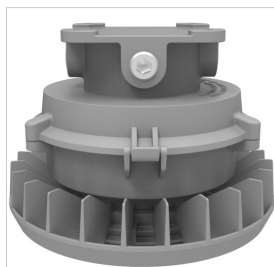
High Performance  
Digital CC Driver



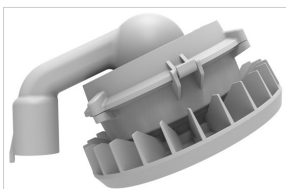
## Mounting Options



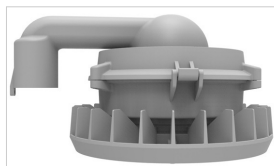
Surface



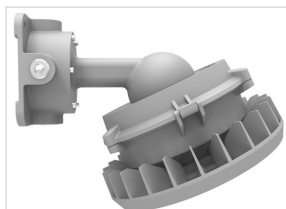
Ceiling



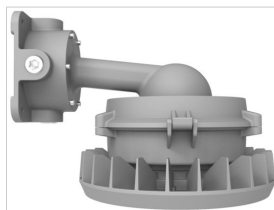
Pole 25 Deg



Pole 90 Deg



Direct Wall  
25 Deg



Direct Wall  
90 Deg

Dimensions
DIA. 260mm
Height 150mm
Weight
4.20kg/9.26lbs

*The specifications in this brochure are representative and must not be interpreted as a guarantee of individual product performance and/or characteristics. LEDRAYS Inc. has a policy of continuous advancements & development specifications may change without notice. Please contact your rep for updates.*