



# LED HP Linear High Bay

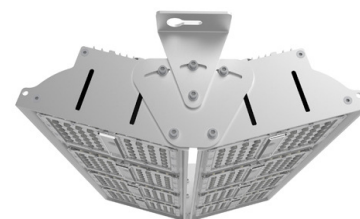
## LEDRAYS Modular Array

### HP 2 Series



### Features

- Innovative Two Part Hybrid Heatsink achieves Great thermal performance
- Structured LED Array with 40° x 80° or 60° x 125° PC Lensing Optimized Aisle Photometric Distribution
- Nichia™ high power LED with >120lm/W efficacy
- Digital drivers with 5 way I<sup>2</sup>O protection
- Twin configurations available for large area coverage
- Rated for real world industrial applications with pendant , hanging or bracket mounting
- 75,000hrs L70 at 30°C Ambient



### Product Specifications

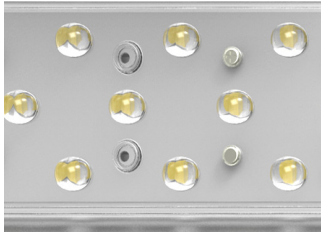
| Model         | Power | LED Type | CCT        | Efficacy (avg.) | Luminous Flux | Beam Angle                   | Net Weight |
|---------------|-------|----------|------------|-----------------|---------------|------------------------------|------------|
| LR-HP-90-v2N  | 90W   | Nichia™  | 4500-5500K | ≥120lm/W        | 11000lm       | 40°V x 80°H/<br>60°V x 125°H | 4.9 ±0.4kg |
| LR-HP-120-v2N | 120W  | Nichia™  | 4500-5500K | ≥120lm/W        | 14500lm       | 40°V x 80°H/<br>60°V x 125°H | 5.1 ±0.4kg |
| LR-HP-150-v2N | 150W  | Nichia™  | 4500-5500K | ≥120lm/W        | 18000lm       | 40°V x 80°H/<br>60°V x 125°H | 6.0 ±0.4kg |
| LR-HP-180-v2N | 180W  | Nichia™  | 4500-5500K | ≥120lm/W        | 22000lm       | 40°V x 80°H/<br>60°V x 125°H | 6.3 ±0.4kg |
| LR-HP-210-v2N | 210W  | Nichia™  | 4500-5500K | ≥120lm/W        | 26000lm       | 40°V x 80°H/<br>60°V x 125°H | 8.2 ±0.4kg |
| LR-HP-240-v2N | 240W  | Nichia™  | 4500-5500K | ≥120lm/W        | 29000lm       | 40°V x 80°H/<br>60°V x 125°H | 8.5 ±0.4kg |

### Electrical Specifications

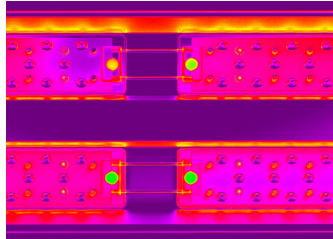
1. Power Input: AC100-277V
2. AC180-508V (Option)
3. Power Factor: ≥98
4. THD: ≤14% @ full Load
5. Dimming: Yes optional



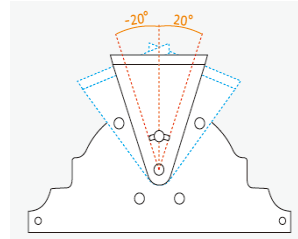
## Product Specifications



Fully Serviceable  
Modular Design



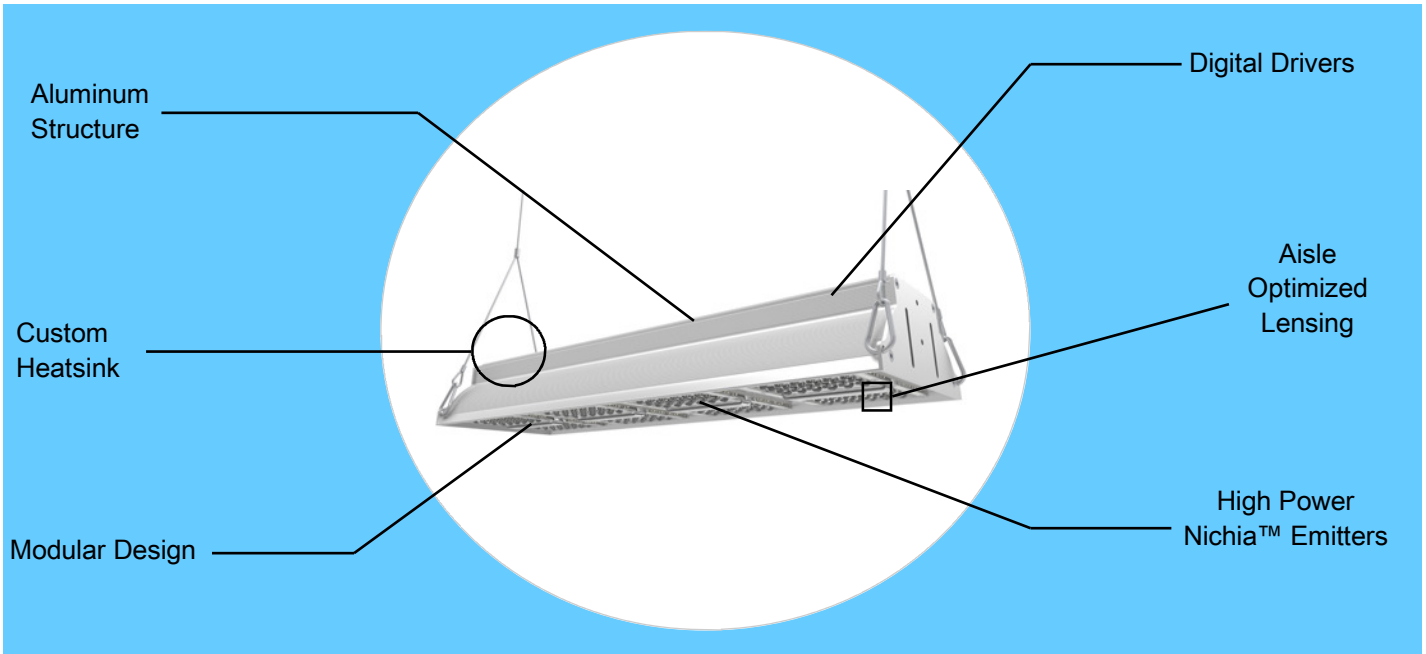
Exceptional Thermal  
Performance



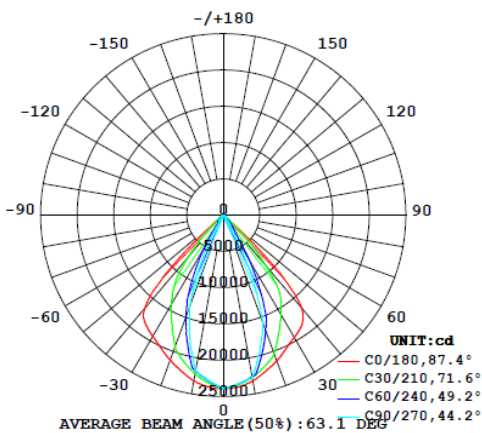
±20 degree Adjustability



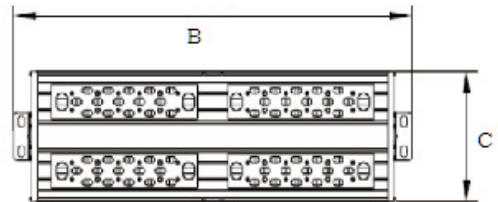
Digital Drivers with  
5 Way Protection



## Luminous Intensity Distribution Diagram



| Dimensions (mm) | A     | B      | C     |
|-----------------|-------|--------|-------|
| 90W & 120W      | 120mm | 690mm  | 200mm |
| 150W & 180W     | 120mm | 990mm  | 200mm |
| 210W & 240W     | 120mm | 1290mm | 200mm |



LR-HP-240-v2N CCT 4500K/40°V x 80°H

*The specifications in this brochure are representative and must not be interpreted as a guarantee of individual product performance and/or characteristics. LEDRAYS Inc. has a policy of continuous advancements & development specifications may change without notice. Please contact your rep for updates.*