

LED

HARSH ENVIRONMENT FIXTURE



LED RAYS

MASTERING LIGHT

HLC 100 Series

NEW

PRELIMINARY

Features

- Harsh Location Luminaire
- Applications for Pharmaceutical, Food, Dairy, Processing Industry, Clean Room
- AC LED Sources for Long Term Reliability
- Stainless Steel Housing with AL6063 Internals
- Driverless Design for 120-240AC Operation
- Borosilicate Glass Protection
- Rear ON/OFF Switch



LONG LIFE
LED
TECHNOLOGY



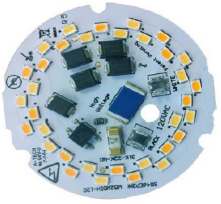
Product Specifications

Model	Power (Typ.)	LED Type (QTY)	CCT	Efficacy	Luminous Flux (Typ.)	Beam Angle	Input Voltage
LR-HLC100-8-55N	8W	SMD (21)	5500K (4500K-5500K Option)	≥88lm/W	725lm	Sym. 120°	120 / 240 VAC
LR-HLC100-12-55N	12W	SMD (30)	5500K (4500K-5500K Option)	≥88lm/W	1050lm	Sym. 120°	120 / 240 VAC
LR-HLC100-15-55N	15W	SMD (40)	5500K (4500K-5500K Option)	≥90lm/W	1350lm	Sym. 120°	120 / 240 VAC

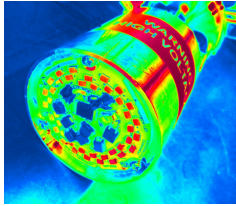
Electrical Specifications:

1. Power Input: AC120-240V
2. AC277-508V (Option)
3. Power Factor: ≥92
4. THD: ≤18% @ full Load
5. Dimming: Yes optional

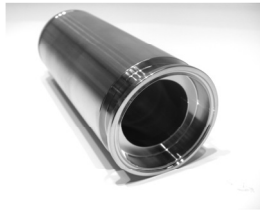
Product Specifications



SMD ACLED Achieves Reliability



Unique Thermal Management (TMS) Structure



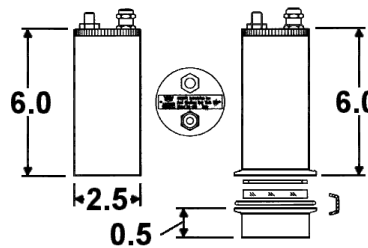
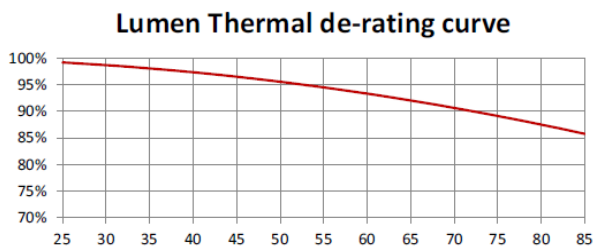
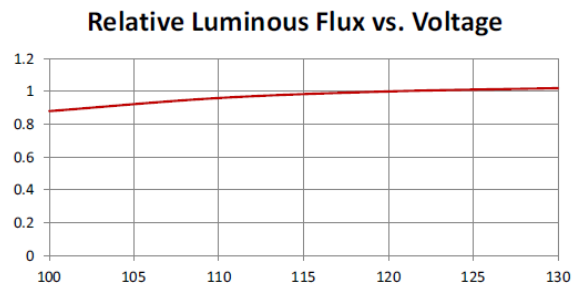
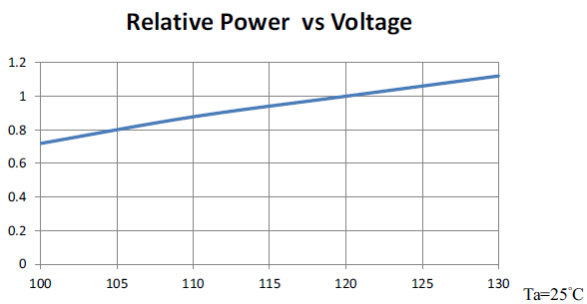
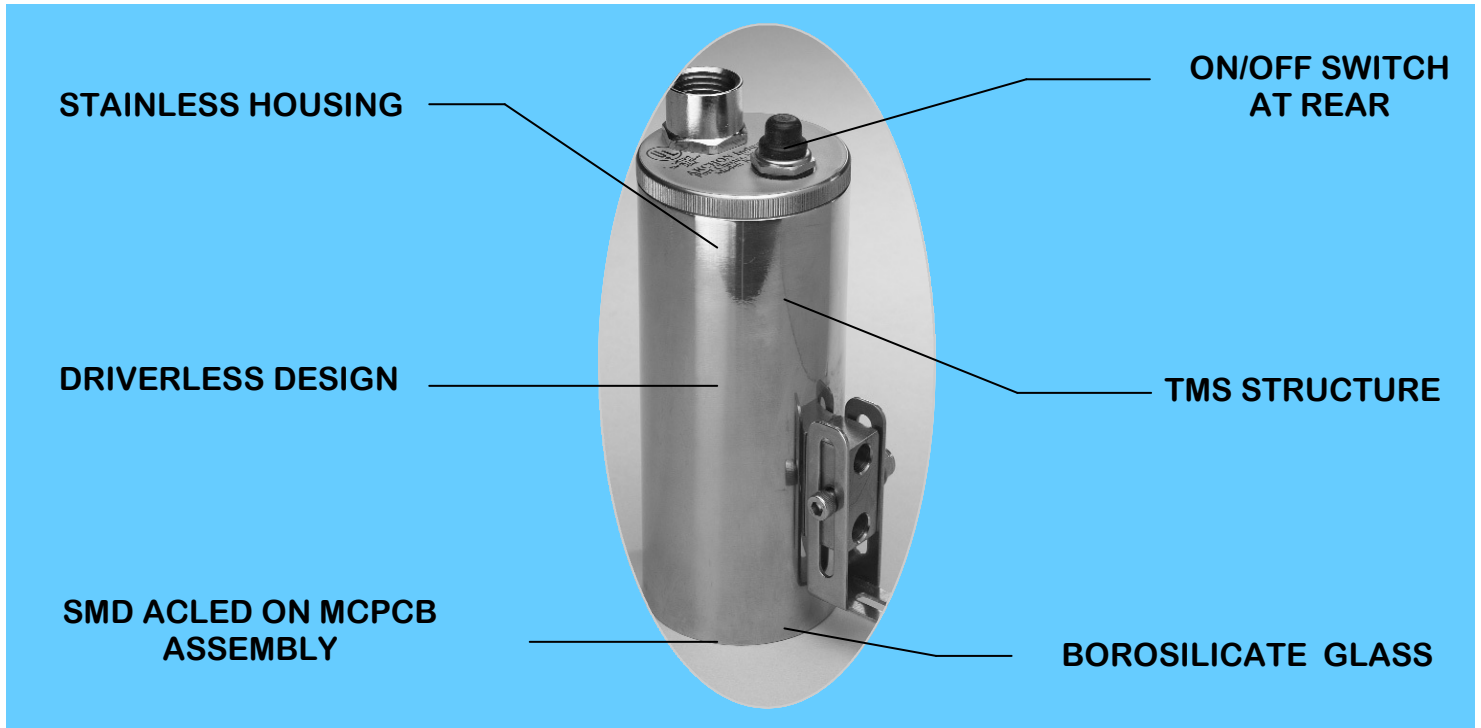
Stainless Housing with Borosilicate Glass



Driverless Design



Precision Machined Internals



The specifications in this brochure are representative and must not be interpreted as a guarantee of individual product performance and/or characteristics. LEDRAYS Inc. has a policy of continuous advancements & development specifications may change without notice. Please contact your rep for updates.