

LED WALLPACK Luminaire



LED RAYS
MASTERING LIGHT

HCO Series

NEW

Features

- Compact Wall Pack Fixture
- IP65 Wet Location Rating
- High Power LUMILED™ LED Engines
- Up to 105lm/W Efficacy with Standard, Full or Half Cut off Distribution
- Digital Driver with 3 Way Protection
- Cast Aluminum Housing Provides Exceptional Thermal Capability & Protection
- 65,000hrs L70 at 25°C Ambient



WARRANTY FIVE YEAR

Product Specifications

| Model | Power | LED Type | CCT | Efficacy (Available) | Luminous Flux | Ra | Beam Angle | IP Level | Input | Size |
|-----------------------------------|-------|----------|-------------|----------------------|---------------|--------|------------|----------|-----------|-------------------|
| LR-HCO-70-55AX | 70W | LUMILED™ | 4500K-6500K | ≥105lm/W | 7600lm | >70-80 | 60°Vx90°H | IP65 | AC85-277V | 356Lx200W x158Hmm |
| LR-HCO-100-55AX | 100W | LUMILED™ | 4500K-6500K | ≥105lm/W | 10500lm | >70-80 | 60°Vx90°H | IP65 | AC85-277V | 366Lx227W x198Hmm |
| LR-HCO-120-55AX (Pending release) | 120W | LUMILED™ | 4500K-6500K | ≥105lm/W | 12600lm | >70-80 | 60°Vx90°H | IP65 | AC85-277V | 365Lx227W x198Hmm |
| LR-HCO-150-55AX | 150W | LUMILED™ | 4500K-6500K | ≥105lm/W | 16000lm | >70-80 | 60°Vx90°H | IP65 | AC85-277V | 366Lx227W x198Hmm |

Electrical Specifications

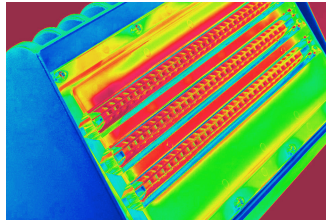
1. Power Input: AC85-277V
2. AC180-528V (Option)
3. Power Factor: ≥96
4. THD: ≤13% @ full Load
5. Dimming: Yes optional

X denotes beam cut off:
S=Standard
H=Half cut off
F=Full cut off

Product Specifications



LUMILED™ Medium Power LED



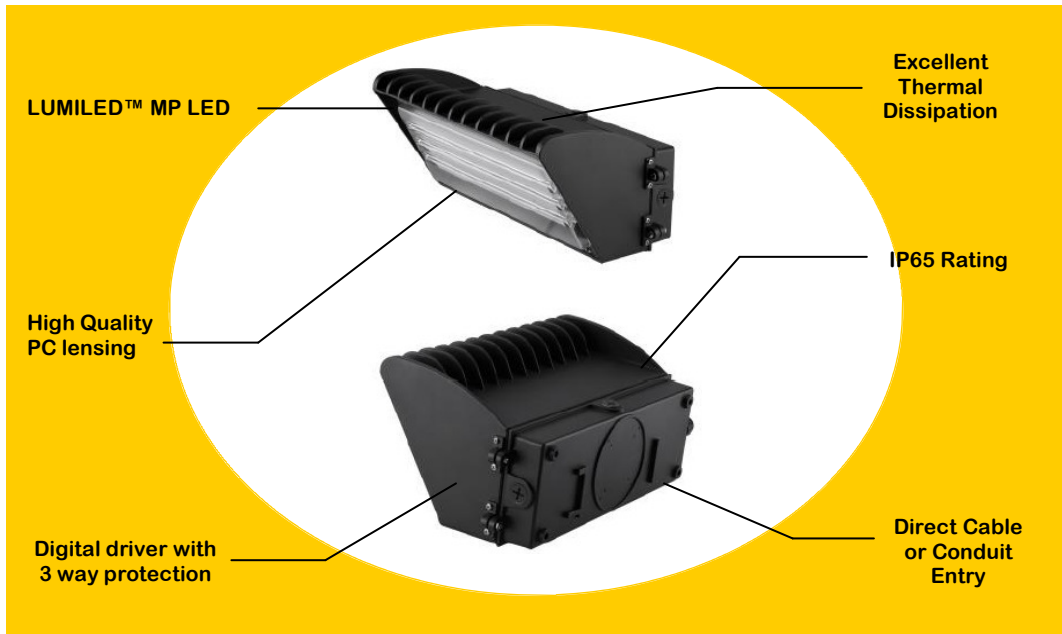
Exceptional Thermal Dissipation



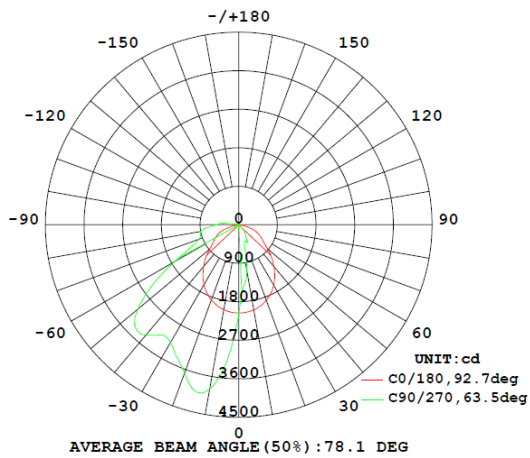
Custom Cast Aluminum Housing for Solid Protection



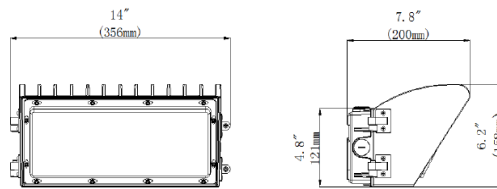
Digital Driver with 3 way protection



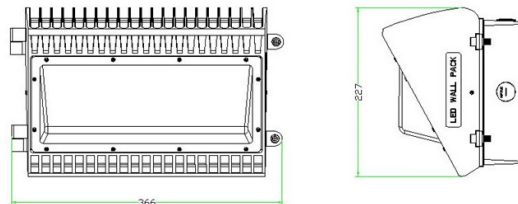
Light Distribution 70W Half cut off



Product Dimensions 70W (Net Weight 5.5Kg ± 0.3kg)



Product Dimensions 100/120/150W (Net Weight 7.5Kg ± 0.3kg)



The specifications in this brochure are representative and must not be interpreted as a guarantee of individual product performance and/or characteristics.

LEDRAYS Inc. has a policy of continuous advancements & development specifications may change without notice.

Please contact your rep for updates.