

LED

Canopy FIXTURE



LED RAYS
MASTERING LIGHT

CCX Series

NEW

Features

- 20W Low Profile Canopy Fixture
- Indoor & Outdoor IP66 rating
- Low Power SMD LED
- Presence & Emergency Driver Options
- Aluminum Structure with PC Prismatic Lensing
- Digital Driver with 4 Way Protection
- Field Replaceable Driver & LED MCPCB
- Cast aluminum Housing Provides Exceptional Thermal Capability & Protection
- 65,000hrs L70 at 25°C Ambient



LONG LIFE
LED
TECHNOLOGY



WARRANTY FIVE YEAR

Product Specifications

Model	Power	LED Type	CCT	Efficacy	Luminous Flux	Beam Angle	IP Level	Input	Size
LR-CCX-20-55A	20W	120 x LP SMD	5500-6500K (4500K-5500K Option)	≥104lm/W	2080lm	120°Vx120°H	IP66	AC85-277V	315Lx315W x100Hmm
LR-CCX-20-55AE	24W	120 x LP SMD	5500-6500K (4500K-5500K Option)	≥84lm/W	2080lm	120°Vx120°H	IP66	AC85-277V Emergency Option	315Lx315W x100Hmm
LR-CCX-20-55AC	20W	120 x LP SMD	5500-6500K (4500K-5500K Option)	≥104lm/W	2080lm	120°Vx120°H	IP66	AC85-277V Sensing/Control Option	315Lx315W x100Hmm
LR-CCX-20-55B	20W	120 x LP SMD	5500-6500K (4500K-5500K Option)	≥104lm/W	2080lm	120°Vx120°H	IP66	AC85-277V	Ø315 x100Hmm
LR-CCX-20-55BE	24W	120 x LP SMD	5500-6500K (4500K-5500K Option)	≥84lm/W	2080lm	120°Vx120°H	IP66	AC85-277V Emergency Option	Ø315 x100Hmm
LR-CCX-20-55BC	20W	120 x LP SMD	5500-6500K (4500K-5500K Option)	≥104lm/W	2080lm	120°Vx120°H	IP66	AC85-277V Sensing/Control option	Ø315 x100Hmm

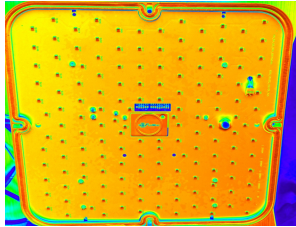
Electrical Specifications

1. Power Input: AC85-277V
2. AC347V (Option)
3. Power Factor: ≥98
4. THD: ≤16% @ full Load
5. Auto Dimming: Yes optional

Product Specifications



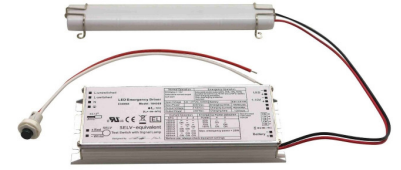
Low Power SMD



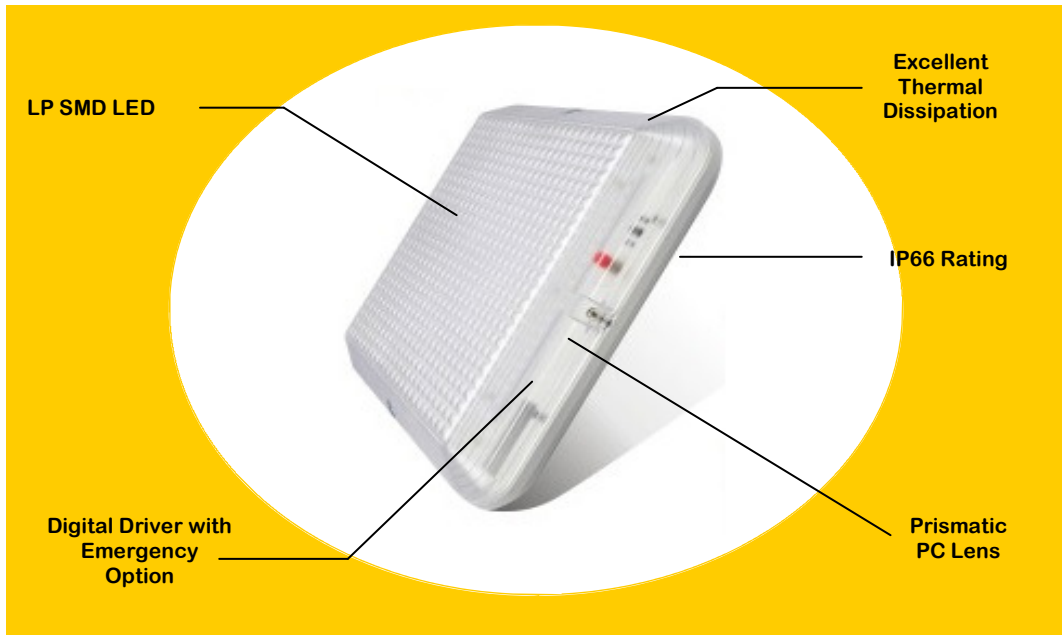
Exceptional Thermal Dissipation



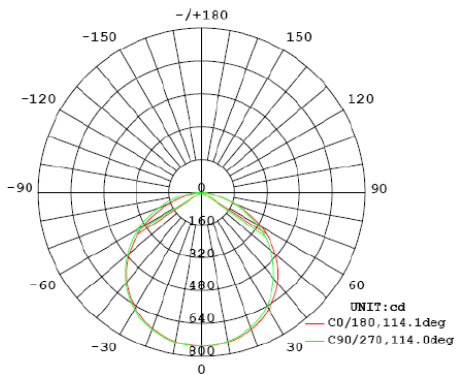
Integrated support for ease of installation & 1/2" Conduit Entry



Digital Driver with 4 Way Protection & Emergency Option



Light Distribution



The specifications in this brochure are representative and must not be interpreted as a guarantee of individual product performance and/or characteristics. LEDRays Inc. has a policy of continuous advancements & development specifications may change without notice. Please contact your rep for updates.

SENSING AND CONTROL (option)	Onboard Intelligence
	Microwave occupancy sensor
Add PD-SS01 to part #	Presence On/Off
Add PD-SS02 to part #	Dimming 25%-100% (Programmable)
EMERGENCY (option)	Maintained Type
Add DE-LBP02 to part #	
Battery	12V 3.2AH NI-MH or Li-ion rechargeable
Rechargeable Times	Up to 300-500 times
Back Up Time	3 Hours+