

LR-HLX150-55C120 GRL KIT

GLARE REDUCING LENS

Instructions



The Plexiglass™ PMMA Poly (methyl methacrylate) glare reducing lens from LEDRAYS Inc. provide glare control for the HLX series LED luminaires.

The lens is perfectly mated to the fixture housing without affecting the thermal pathways necessary for optimum cooling.

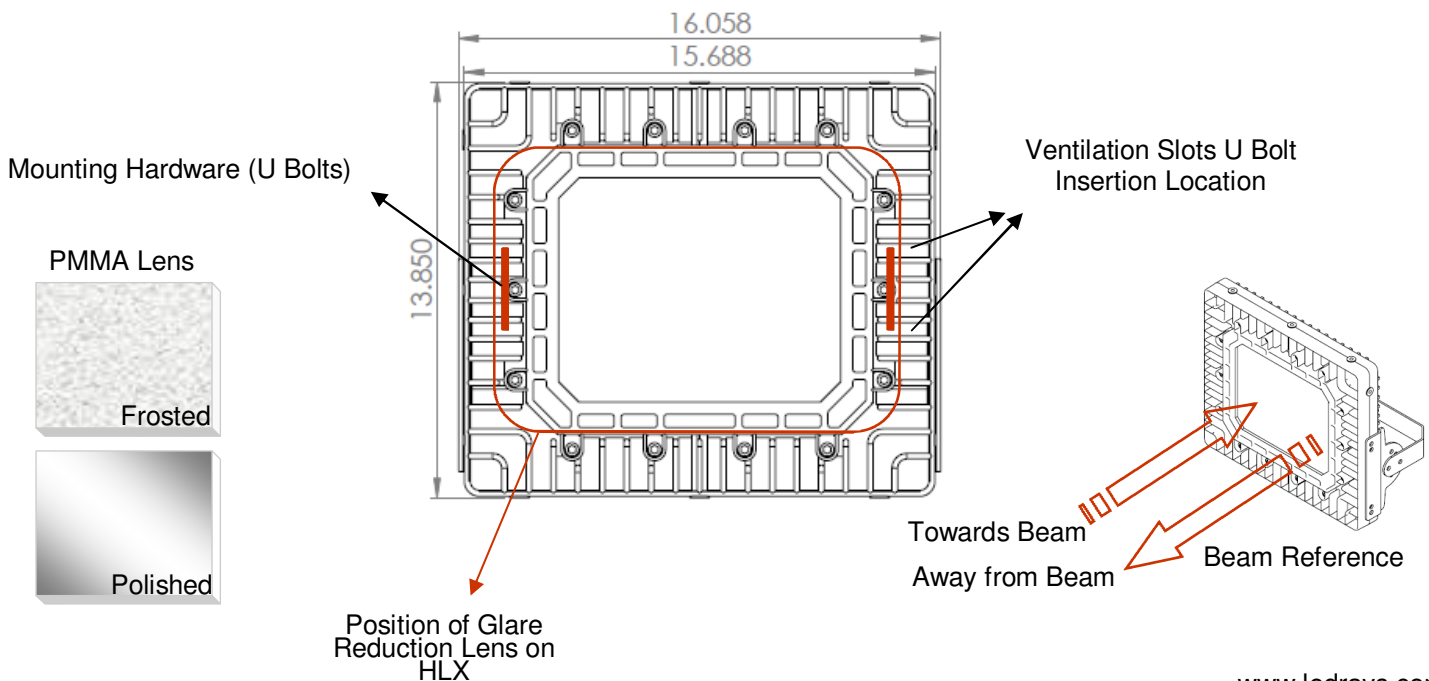
Each synthetic polymer lens is supplied as a kit with all necessary mounting hardware. The transparent thermoplastic lens is designed for dual use with each face providing a different degree of light scattering capability.

The user can control light loss by having either the polished or frosted surface facing the light beam. Additionally the hardware can accommodate multiple lenses for a greater range of light diffraction performance.

Light Loss Table:

LIGHT LOSS TABLE				
Lens QTY	Frosted Side Towards Beam	Frosted Side Away from Beam	Light Loss	Notes
1		X	15%	Refer to beam diagram below
1	X		20%	Refer to Beam Diagram below
2		X	34%	Lenses with frosted side facing away from beam
2	X		42%	Lenses with frosted side facing towards beam
2	X	X	38%	Lenses with frosted side facing towards each other
2	X	X	38%	Lenses with frosted side facing away from each other

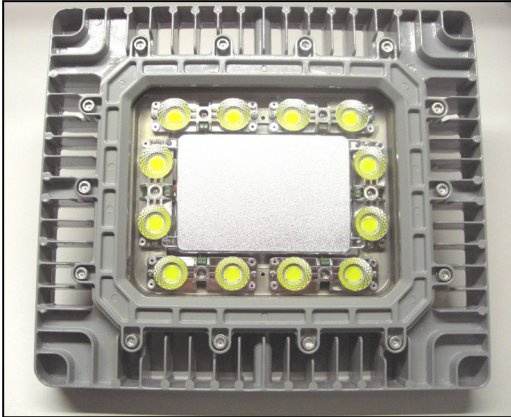
Glare Reducing Lens Position on HLX LED Luminaire:



Verify kit contents.

Each GRL kit includes the following:
1 x Dual sided PMMA lens with mounting guides
2 x Threaded U bolts
2 x Backing plates
4 x Nuts (5/16" 18T)

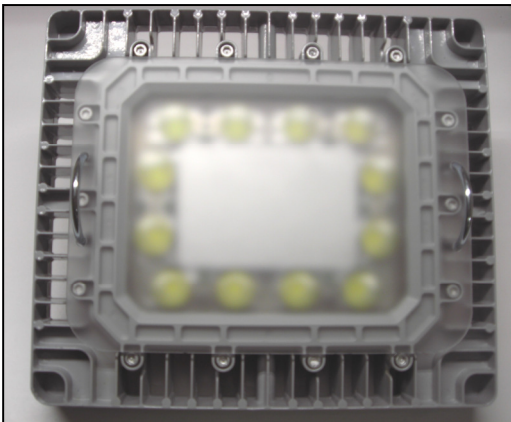
1. Peel the protective film from both lens faces
2. Insert U bolts into lens face. Please refer to the light loss table on page 1 for corresponding effect
3. Compress U bolts legs towards each other when inserting into PMMA lens
4. Locate the U bolt insertion slots on fixture as per diagram on page 1 and images # 4 & 5
5. Place PMMA lens on HLX housing as shown on diagram on page 1 and images # 3 & 4
6. Install backing plates on U bolts from the rear of the HLX luminaire
7. Thread nuts onto U bolts until they are snug with back plates.
Torque range 8-12 in.lb (0.9-1.35NM)



① HLX Luminaire



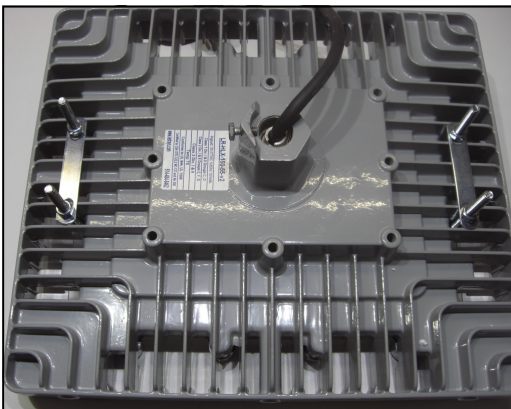
② GRL Kit Contents



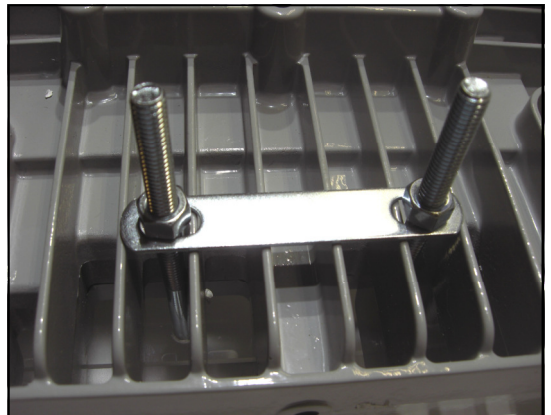
③ GRL Kit on HLX Luminaire



④ GRL Kit Contents



⑤ U Bolts & Backing Plates Location



⑥ U Bolts, Nuts & Backing Plates