



Features

- High Performance Linear LED
- SMD Low Power LED
- Performance version with 120 to 140lm/w+ Efficacy
- Standard & custom Lengths
- Available with >90 CRI
- Internal, External, Multi & Emergency options Digital Driver with 3 Way Protection
- 6063 Aluminium Extrusion with Superb Thermal Performance



Ordering Information

LR-T8										
Range	Power/Size	Efficacy lm/w	CCT/Color	Input Internal/ External Driver	Dimming	Tubes per Driver	Mounting	CRI	Viewing Angle	PC Cover
LR-T8	<input type="checkbox"/> (9W) - 600mm <input type="checkbox"/> (14W) - 900mm <input type="checkbox"/> (15W) - 1200mm <input type="checkbox"/> (18W) - 1200mm <input type="checkbox"/> (22W) - 1200mm <input type="checkbox"/> (22W) - 1500mm <input type="checkbox"/> (24W) - 1800mm <input type="checkbox"/> (36W) - 2400mm <input type="checkbox"/> (18U) - 600mm U shaped tube	<input type="checkbox"/> (E) 110-120lm/w E series <input type="checkbox"/> (P) 120-130lm/w P series <input type="checkbox"/> (HO) 130-140lm/w HO series <input type="checkbox"/> (C) 140lm/w+ C series	<input type="checkbox"/> (1) 2700-3500K <input type="checkbox"/> (2) 3500-4500K <input type="checkbox"/> (3) 4500-5500K <input type="checkbox"/> (4) RGB <input type="checkbox"/> (5) Custom	<input type="checkbox"/> (D1) DC12-40V Int. <input type="checkbox"/> (A1) AC100-277V Int. <input type="checkbox"/> (A2) AC347V Int. <input type="checkbox"/> (D2) DC12-40V Ext. <input type="checkbox"/> (A3) AC100-277V Ext. <input type="checkbox"/> (A4) AC347V Ext.	<input type="checkbox"/> (Blank) None <input type="checkbox"/> (M) 1-10V/PWM/R value <input type="checkbox"/> (D) DALI <input type="checkbox"/> (L) LEDIM <input type="checkbox"/> (T) TEDIM <input type="checkbox"/> (X) DMX512	<input type="checkbox"/> (1) Single <input type="checkbox"/> (2) Twin <input type="checkbox"/> (2E) Twin (Emergency 90mins AC100-277V) <input type="checkbox"/> (3) Triple <input type="checkbox"/> (4) Quad	<input type="checkbox"/> (A) G13 Bi Pin <input type="checkbox"/> (B) FA8 single Pin <input type="checkbox"/> (C) HO RD17 <input type="checkbox"/> (D) Surface	<input type="checkbox"/> (B) >70 <input type="checkbox"/> (M) >80 <input type="checkbox"/> (H) >90 <input type="checkbox"/> (+) >90+	<input type="checkbox"/> (R) 120 Deg <input type="checkbox"/> (W) 180 Deg	<input type="checkbox"/> (C) Clear <input type="checkbox"/> (D) Diffusing <input type="checkbox"/> (S) Semi-diffusing

Example: LR-T818WP2A1-1ABRC is an 18W (1200mm) P series 3500-4500K AC100-277V no dim 1 tube/driver with G13 pin 70 CRI 120 degrees clear cover LED tube

Bare Lamp Data: 18W 1200mm P series 5000K

Test date	2014-01-04		Test Ambient:		25.1 ° C		
Sample No.	Voltage (V AC)	Frequency (Hz)	Current (A)	Power (W)	PF	THD	
1310022-4	120.0	60	0.156	17.68	0.994	7.62%	
	277.0	60	0.066	17.92	0.978	10.51%	
Lumen Flux (lm)	Efficacy (lm/w)		CRI	R9	CCT (K)		
2173	122.91		84.2	32	5077		
Chromaticity Coordinate			Duv	Stabilization Time (min)			
x=0.3430 y=0.3498			u'=0.2107 v'=0.4835	-0.0001 60			



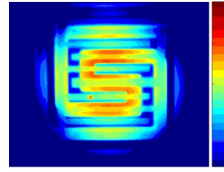
Product Specifications



Low Power SMD LED with High CRI



FEA Designed Heatsink Structure



Exceptional Thermal Performance



Digital Driver .96PF & <15% THD

4 Mounting Options

Wide Voltage Range in both AC & DC Models

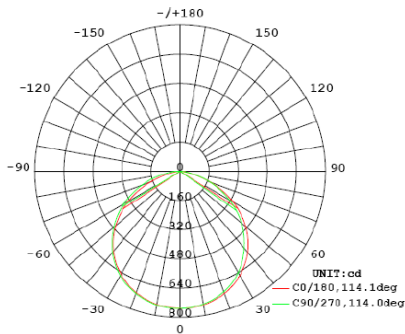
LPSMD™ Low Power Emitters with >140lm/w Available

Digital Driver

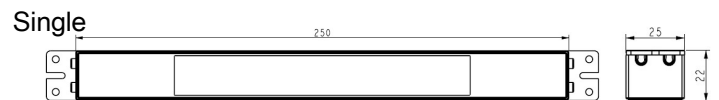
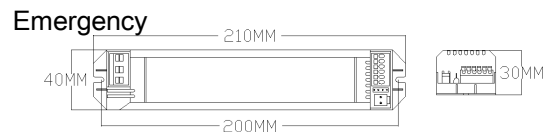
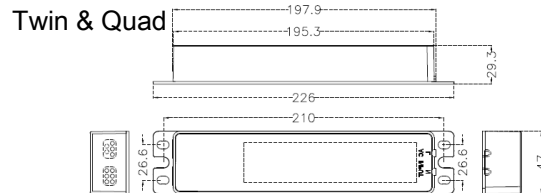
Very Low Junction Temperature

Unique Heatsink

Distribution Curves 18W 1200mm 120°



External Driver Dimensions



Surface Mount Units

180 Deg. 120 Deg.



The specifications in this brochure are representative and must not be interpreted as a guarantee of individual product performance and/or characteristics. LEDRays Inc. has a policy of continuous advancements & development specifications may change without notice. Please contact your rep for updates.