



NEW

Features

- Integrated Linear LED Luminaire
- MEPI™ Low Power LED
- >100lm/w Efficacy
- IP65 Rating Indoor or Outdoor Use
- Digital Driver with 3 Way Protection
- Aluminium Housing for High Thermal Performance
- Hard Coated PC Lens
- Semi Opaque or Opaque Specular Lensing
- 65,000hrs L70 at 25°C Ambient



Product Specifications

| Model | Power Size | LED Type & QTY | CCT | Efficacy | Luminous Flux | CRI | Beam Angle | IP Level |
|-------------|------------|----------------|------------|----------|---------------|-------|------------|----------|
| LR-RLL20E6 | 20W/600mm | MEPI™ 120 | 3000-6500K | ≥100lm/W | 1700-2100lm | 80-85 | 120° | IP65 |
| LR-RLL30E6 | 30W/600mm | MEPI™ 180 | 3000-6500K | ≥100lm/W | 2700-3100lm | 80-85 | 120° | IP65 |
| LR-RLL40E12 | 40W/1200mm | MEPI™ 240 | 3000-6500K | ≥100lm/W | 3700-4200lm | 80-85 | 120° | IP65 |
| LR-RLL50E12 | 50W/1200mm | MEPI™ 288 | 3000-6500K | ≥100lm/W | 4700-5200lm | 80-85 | 120° | IP65 |
| LR-RLL50E15 | 50w/1500mm | MEPI™ 288 | 3000-6500K | ≥100lm/W | 4700-5200lm | 80-85 | 120° | IP65 |
| LR-RLL60E15 | 60W/1500mm | MEPI™ 336 | 3000-6500K | ≥100lm/W | 5700-6200lm | 80-85 | 120° | IP65 |

Electrical Specifications

1. Power Input: AC100-277V
2. AC180-508V (Option)
3. Power Factor: ≥96
4. THD: ≤15% @ full Load
5. Dimming: Yes optional

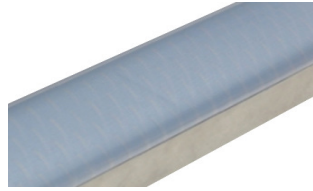


MEPI

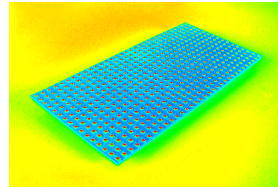
Product Specifications



Low Power MEPI™ SMD LED



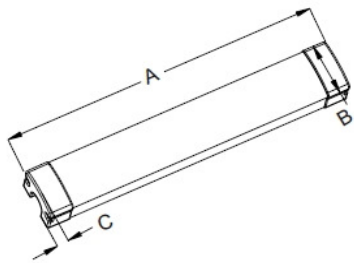
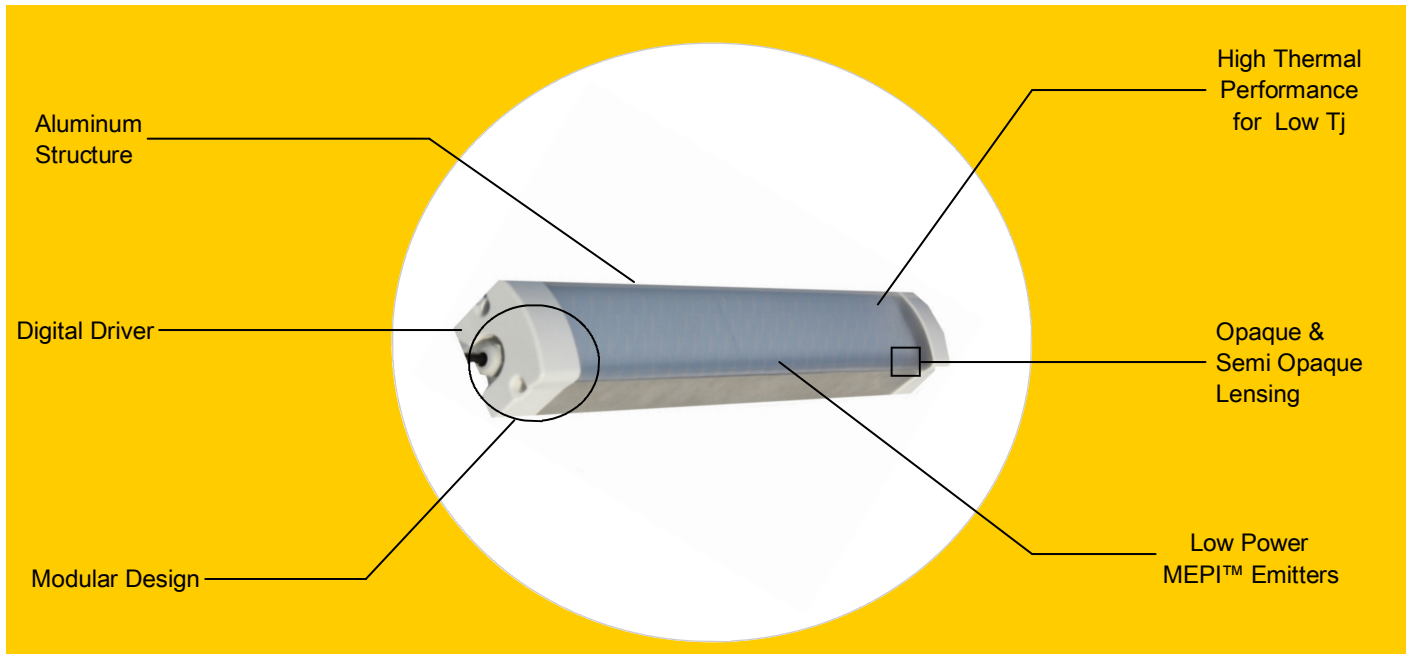
Hard Coated PC Lens



Exceptional Thermal Performance

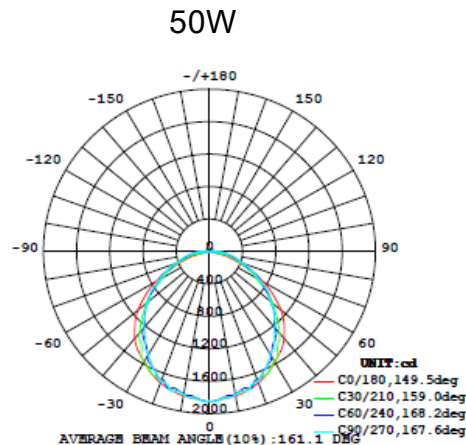
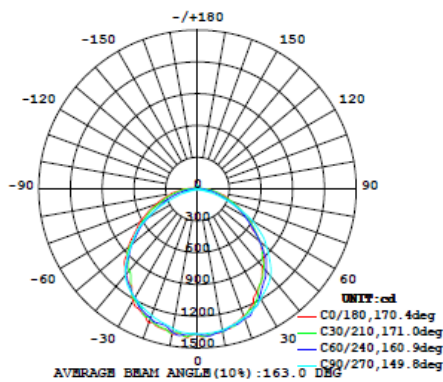


Digital Driver with 3 Ways protection



| Length mm | A | B | | C | Weight |
|-----------|--------|--------|--------|--------|--------------|
| | Min.mm | Min.mm | Min.mm | Min.mm | |
| 600 | 600 | 91 | 92 | 74 | 1.2kg/2.75lb |
| 1200 | 1200 | 91 | 92 | 74 | 2kg/4.4lb |
| 1500 | 1500 | 91 | 92 | 74 | 2.3kg/5.1lb |

Distribution Curves



The specifications in this brochure are representative and must not be interpreted as a guarantee of individual product performance and/or characteristics.

LED Rays Inc. has a policy of continuous advancements & development specifications may change without notice. Please contact your rep for updates.