

LED

Orbit High Bay

LED RAYS SSC



LED RAYS

MASTERING LIGHT

OHB Series

NEW

Features

- Unique Circular High Bay
- SSC™ SMD Low Power LED
- >90lm/w Efficacy
- 60°, 90° or 120° lensing
- IP65 Protection Rating
- Digital Driver with 4 Way Protection
- Cast Aluminium Housing with Superb Thermal Performance
- 60,000hrs L70 at 30°C Ambient

Preliminary



Product Specifications

| Model | Power | LED Type & QTY | CCT | Efficacy Avg | Luminous Flux | CRI | Beam Angle | IP Level |
|--------------|-------|----------------|------------|--------------|---------------|-----|--------------|----------|
| LR-OHB100-XX | 100 | SSC™ 126 | 3000-6500K | ≥90lm/W | 8000-9000lm | 80 | 60°/90°/120° | IP65 |
| LR-OHB160-XX | 160 | SSC™ 198 | 3000-6500K | ≥90lm/W | 13000-15000lm | 80 | 60°/90°/120° | IP65 |
| LR-OHB200-XX | 200 | SSC™ 246 | 3000-6500K | ≥90lm/W | 16000-18000lm | 80 | 60°/90°/120° | IP65 |

Electrical Specifications

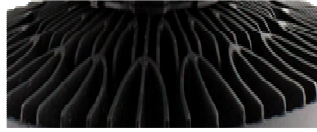
1. Power Input: AC100-277V
2. Power Factor: ≥98
3. THD: ≤15% @ full Load
4. Dimming: Yes optional



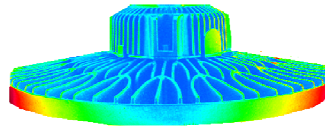
Product Specifications



Low Power SSC™ SMD LED



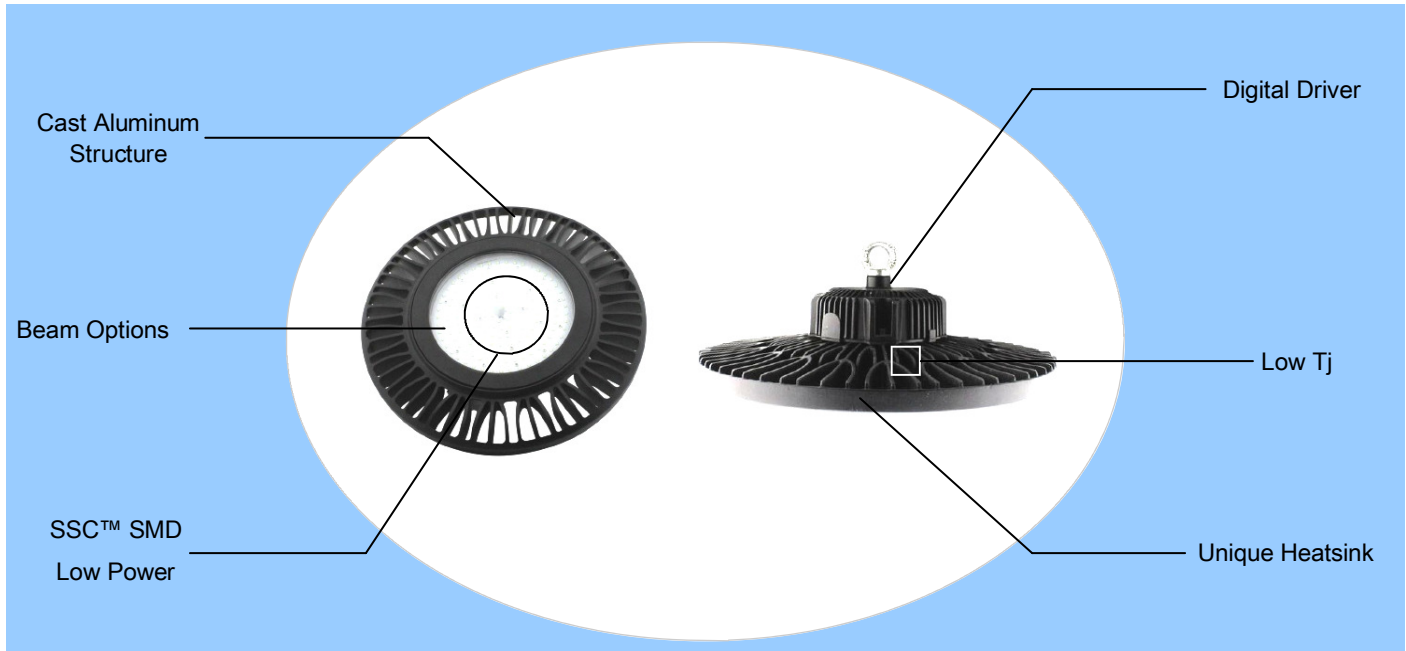
FEA Designed Heatsink Structure



Exceptional Thermal Performance

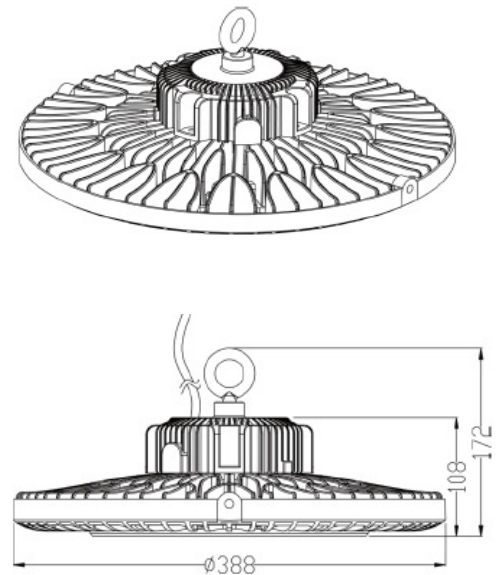
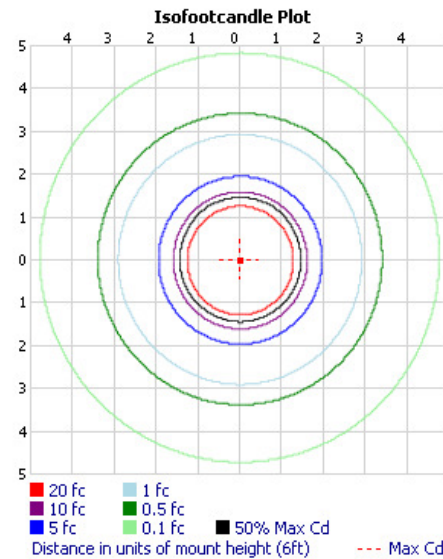
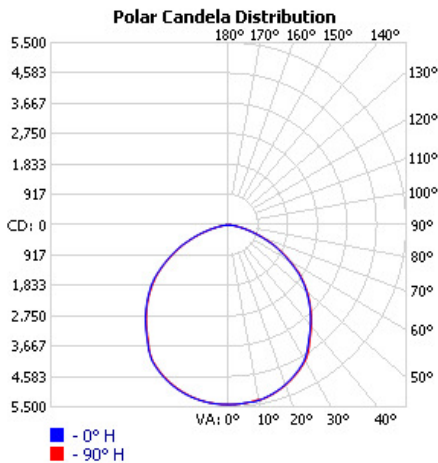


Digital Driver .98PF & <15% THD



Distribution Curves 120W 120°

Net Weight: 6.7kg



The specifications in this brochure are representative and must not be interpreted as a guarantee of individual product performance and/or characteristics.

LEDReys Inc. has a policy of continuous advancements & development specifications may change without notice. Please contact your rep for updates.