

# LED

## Weatherproof Linear LED Luminaire

### LEDRays SMD



# LED RAYS

MASTERING LIGHT

## LWP Series

# NEW

### Features

- Linear LED Luminaire
- EPI/Bridgelux™ Low Power LED
- >108lm/w Efficacy
- IP65 Rating Fiberglass with Stainless Hardware Construction
- Digital Driver with 3 Way Protection
- Independent modular Light Engines Available in Single, Twin & Quad Configuration
- Aluminium Full Length Heatsink for Thermal Performance
- Acrylic or Polycarbonate Linear Rib Lensing
- 65,000hrs L70 at 25°C Ambient



### Product Specifications

Model	Power Size	LED Type	CCT	Efficacy	Luminous Flux	CRI	Beam Angle	IP Level
LR-LWP69-41C	9W/600mm	MEPI™	3000-6500K	≥108lm/W	950-1100lm	80-85	120°	IP65
LR-LWP618-41C	18W/600mm	MEPI™	3000-6500K	≥108lm/W	1950-2100lm	80-85	120°	IP65
LR-LWP1218-41C	18W/1200mm	MEPI™	3000-6500K	≥108lm/W	1950-2100lm	80-85	120°	IP65
LR-LWP1236-41C	36W/1200mm	MEPI™	3000-6500K	≥108lm/W	3850-4100lm	80-85	120°	IP65
LR-LWP2436-41C	36W/2400mm	MEPI™	3000-6500K	≥108lm/W	3850-4100lm	80-85	120°	IP65
LR-LWP2472-41C	72W/2400mm	MEPI™	3000-6500K	≥108lm/W	7750-8100lm	80-85	120°	IP65

### Electrical Specifications

- 1.Power Input: AC100-277V
- 2.AC347V & DC input/emergency driver (Option)
- 3.Power Factor: ≥96
- 4.TH.D: ≤15% @ full Load
- 5.Dimming: Yes optional



# MEPI

www.ledrays.com

# LED Waterproof Linear Luminaire

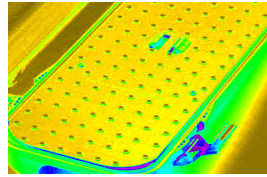
## Product Specifications



Low Power MEPI™ SMD LED



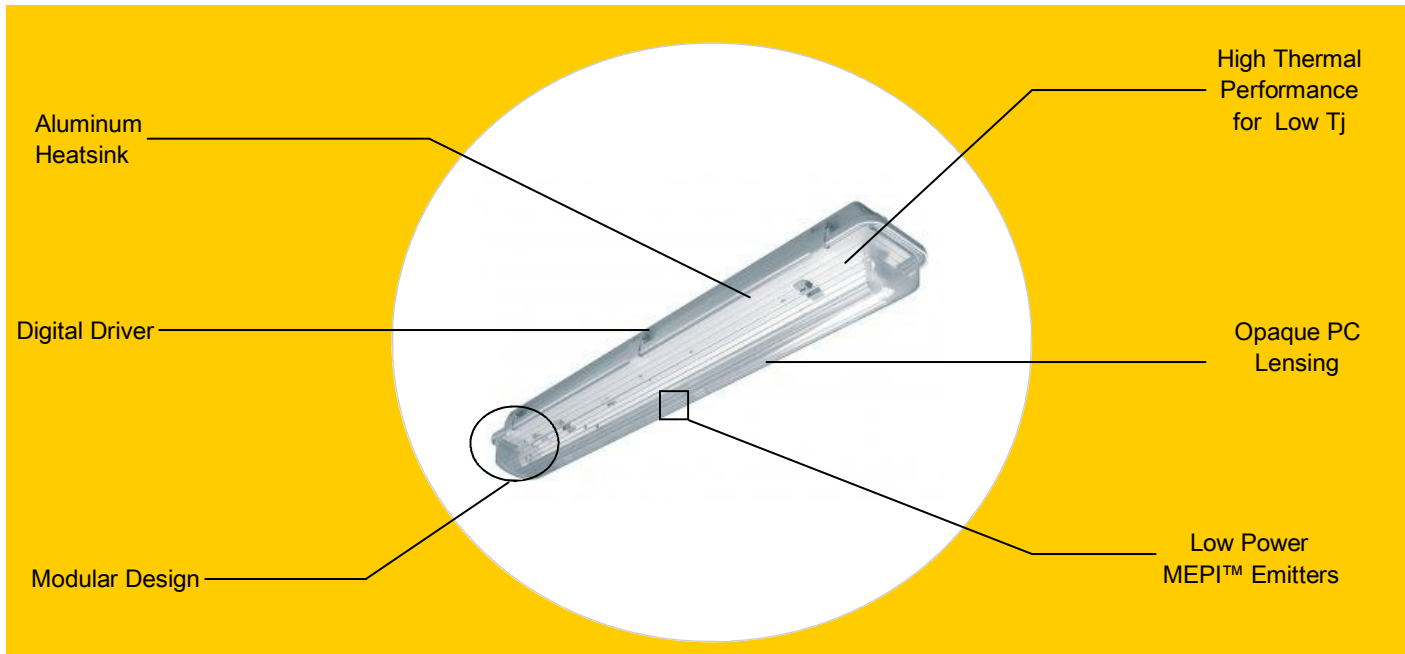
Hard Coated PC Lens



Exceptional Thermal Performance

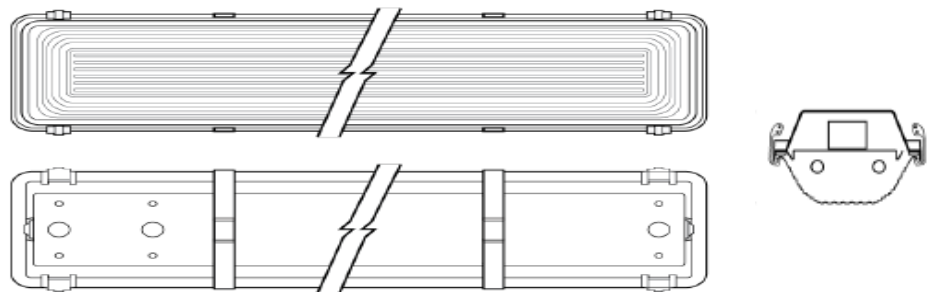
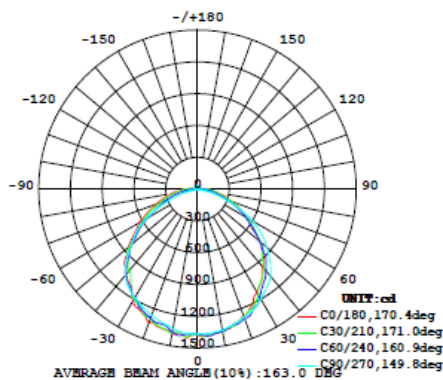


Digital Driver with 3 Ways protection



Size	Length mm	Width Single	Width Twin	Height	Weight
	Min.mm	Min.mm		Min.mm	
600	670	102	172	102	2.8kg/±0.5kg
1200	1310	102	172	102	4.1kg/±0.5kg
2400	2505	102	172	102	6.9kg/±0.5kg

## Distribution Curve 36W



The specifications in this brochure are representative and must not be interpreted as a guarantee of individual product performance and/or characteristics. LEDRays Inc. has a policy of continuous advancements & development specifications may change without notice. Please contact your rep for updates.