

LED

Indirect Luminaire

LEDRays LP SMD



LED RAYS MASTERING LIGHT

ITL Series

NEW

Features

- Indirect LED Troffer Luminaire
- Available with ANSI 3000K, 4000k & 5000K color temperature
- >105lm/w Efficacy
- Available in standard 2'x2', 2'x4' & 1'x4' configurations
- Digital Constant Current Driver with 3 Way Protection
- High Grade PMMA Diffuser Provide Low Glare Direct Viewing Comfort
- 65,000hrs L70 at 25°C Ambient



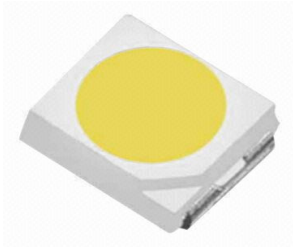
Product Specifications

Model	Power	LED TYPE	E Size	Size Metric	CCT	Typ. Luminous Flux	CRI
LR-ITL40-22-30	40W	LP SMD	23.75" x 23.75" x 4.92"	603 x 603 x 125mm	3000K (Option 4000k & 5000K)	4100lm	>80
LR-ITL40-14-30	40W	LP SMD	11.92" x 47.55" x 4.92"	303 X 1208 X 125mm	3000K (Option 4000k & 5000K)	4100lm	>80
LR-ITL60-24-30	60W	LP SMD	23.75" x 47.55" x 4.92"	603 X 1208 X 125mm	3000K (Option 4000k & 5000K)	6200lm	>80

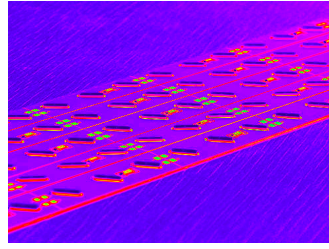
Electrical Specifications

- 1.Power Input: AC100-240V
- 2.AC180-508V (Option)
- 3.Power Factor: ≥92
- 4.TH.D: ≤20% @ full Load
- 5.Dimming: Yes optional

Product Specifications



LP SMD LED Chip



High Conductivity Alloy (HCA) Thermal Pathway



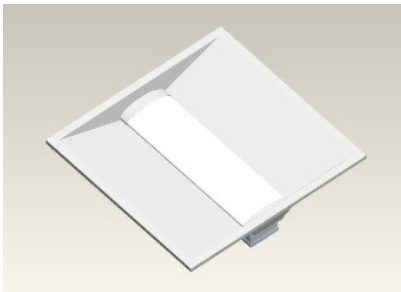
Superior Transmission Optics Provides Reduced Glare



High Performance Digital Driver

Product Weight

LR-ITL40-22-30



2.5kg \pm 0,5kg

LR-ITL40-14-30



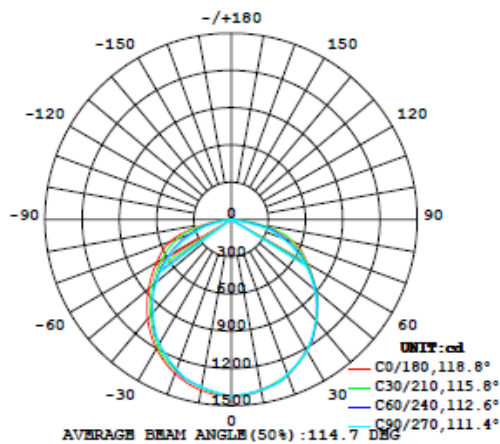
2.5kg \pm 0,5kg

LR-ITL60-24-30



3.8kg \pm 0,5kg

Distribution Curve (LR-ITL40-22-30)



The specifications in this brochure are representative and must not be interpreted as a guarantee of individual product performance and/or characteristics.

LEDKeys Inc. has a policy of continuous advancements & development specifications may change without notice. Please contact your rep for updates.