

LED

Modular Wall Luminaire

LED RAYS Controlled Beam



LED RAYS

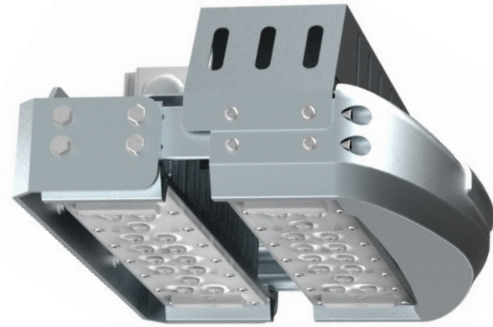
MASTERING LIGHT

HPW Series

NEW

Features

- Unique heatsink offering unparalleled thermal capability for exceptional thermal dissipation
- Structured LED Array for Optimized Photometric Distribution
- Nichia™ high power LED
- Forward serviceable luminaire
- Digital driver with 5 way I²O protection
- Cast Aluminium housing provides for a light and rigid carrier for the light engine
- Rated IP65 provides harsh environment capability
- 50,000hrs L70 at 30°C Ambient



Product Specifications

Model	Power	LED Type	CCT	Efficacy	Luminous Flux	Beam Angle	IP Level
LR-HPW-60-v2N	60W	Nichia™	4500-5500K	≥90lm/W	5500-7000lm	60x90°	IP65
LR-HPW-90-v2N	90W	Nichia™	4500-5500K	≥90lm/W	8000-10000lm	60x90°	IP65
LR-HPW-120-v2N	120W	Nichia™	4500-5500K	≥90lm/W	10500-13500lm	60x90°	IP65
LR-HPW-150-v2N	150W	Nichia™	4500-5500K	≥90lm/W	13500-17000lm	60x90°	IP65

Electrical Specifications

1. Power Input: AC100-277V
2. AC180-508V (Option)
3. Power Factor: ≥96
4. THD: ≤15% @ full Load
5. Dimming: Yes optional



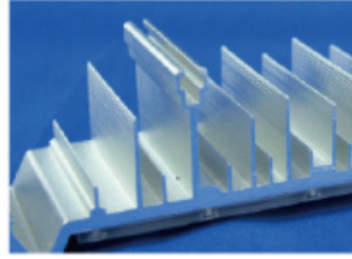
Product Specifications



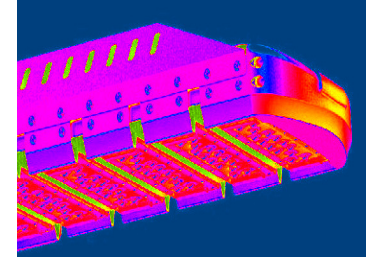
Fully serviceable modular design in a rugged chassis achieves high efficacy



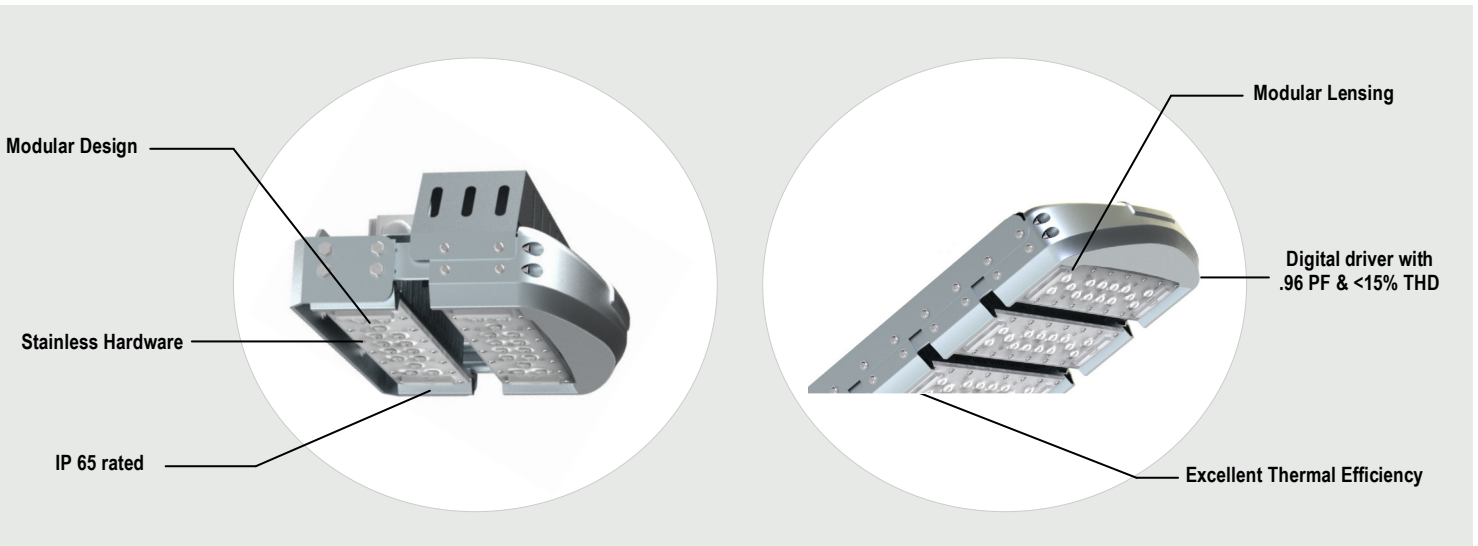
Modular lensing improves light transmission and optical efficiency



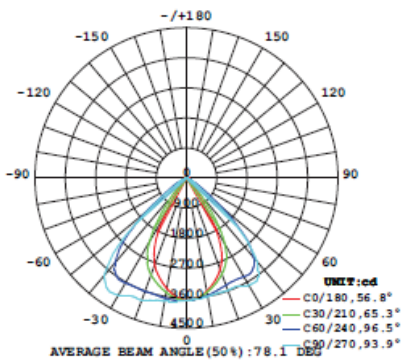
Unique custom heatsink for improved thermal dissipation and longer life



CAD optimized housing with thermal pathways



Distribution Curve (LR-HPW-60-v2N)



Model	Weight	Dimensions
LR-HPW-60-v2N	5.5kg±0.5kg	L320mm*W320mm*H100mm
LR-HPW-90-v2N	6.1kg±0.5kg	L370mm*W320mm*H100mm
LR-HPW-120-v2N	6.8kg±0.5kg	L425mm*W320mm*H100mm
LR-HPW-150-v2N	7.6kg±0.5kg	L480mm*W320mm*H100mm

The specifications in this brochure are representative and must not be interpreted as a guarantee of individual product performance and/or characteristics.

LEDKeys Inc. has a policy of continuous advancements & development specifications may change without notice. Please contact your rep for updates.

LUMIA AGENCY
LIGHTING EVOLVED