

# LED High Bay Luminaire

LED RAYS UHE Array



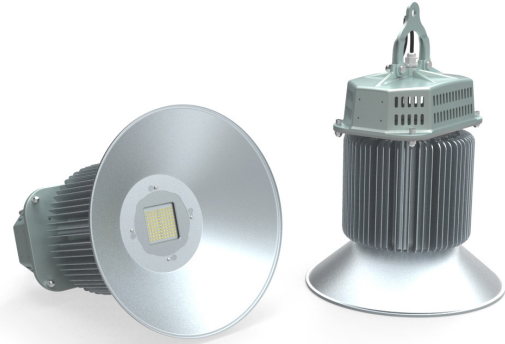
LED RAYS  
MASTERING LIGHT

HBX v2 Series

NEW

## Features

- Custom heatsink extrusion offering unparalleled thermal capability
- Nichia™ structured high power LED emitters.
- 120W to 240W power in a hybrid array.
- Beam flexibility provides optimized photometric distribution
- 26000 lm & >108lm/w for 240W
- Digital driver with 3 way I<sup>2</sup>O protection
- Exceptional power factor & low THD
- AC100-277 range & 180-528V option
- 50,000hrs L70 at 30°C Ambient



## Product Specifications

Model	Power	LED Type	CCT	Efficacy (avg)	Luminous Flux	Beam Angle	IP Level
LR-HBX-120-v2N	120W	Nichia™ Individual Emitters	4500-6500K	≥108lm/W	12000-14500lm	70°PC 90°AL 120°AL	IP30 or IP54
LR-HBX-160-v2N	160W	Nichia™ Individual Emitters	4500-6500K	≥108lm/W	16000-19000lm	70°PC 90°AL 120°AL	IP30 or IP54
LR-HBX-200-v2N	200W	Nichia™ Individual Emitters	4500-6500K	≥108lm/W	20000-23500lm	70°PC 90°AL 120°AL	IP30 or IP54
LR-HBX-240-v2N	240W	Nichia™ Individual Emitters	4500-6500K	≥108lm/W	24500-26000lm	70°PC 90°AL 120°AL	IP30 or IP54

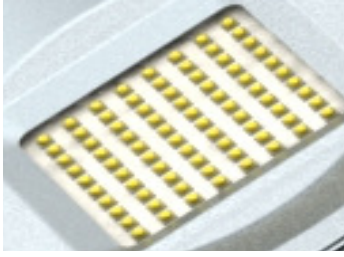
## Electrical Specifications

1. Power Input: AC100-277V
2. AC180-528V
3. Power Factor: ≥96
4. THD: ≤14% @ full Load
5. Dimming: Yes optional

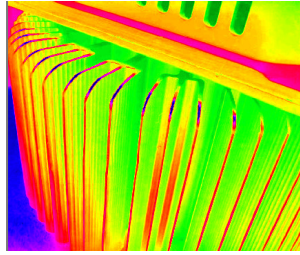


# LED High Bay Luminaire

## Product Specifications



Individual Nichia™ structured high power LED emitters achieve Ultra High Efficacy



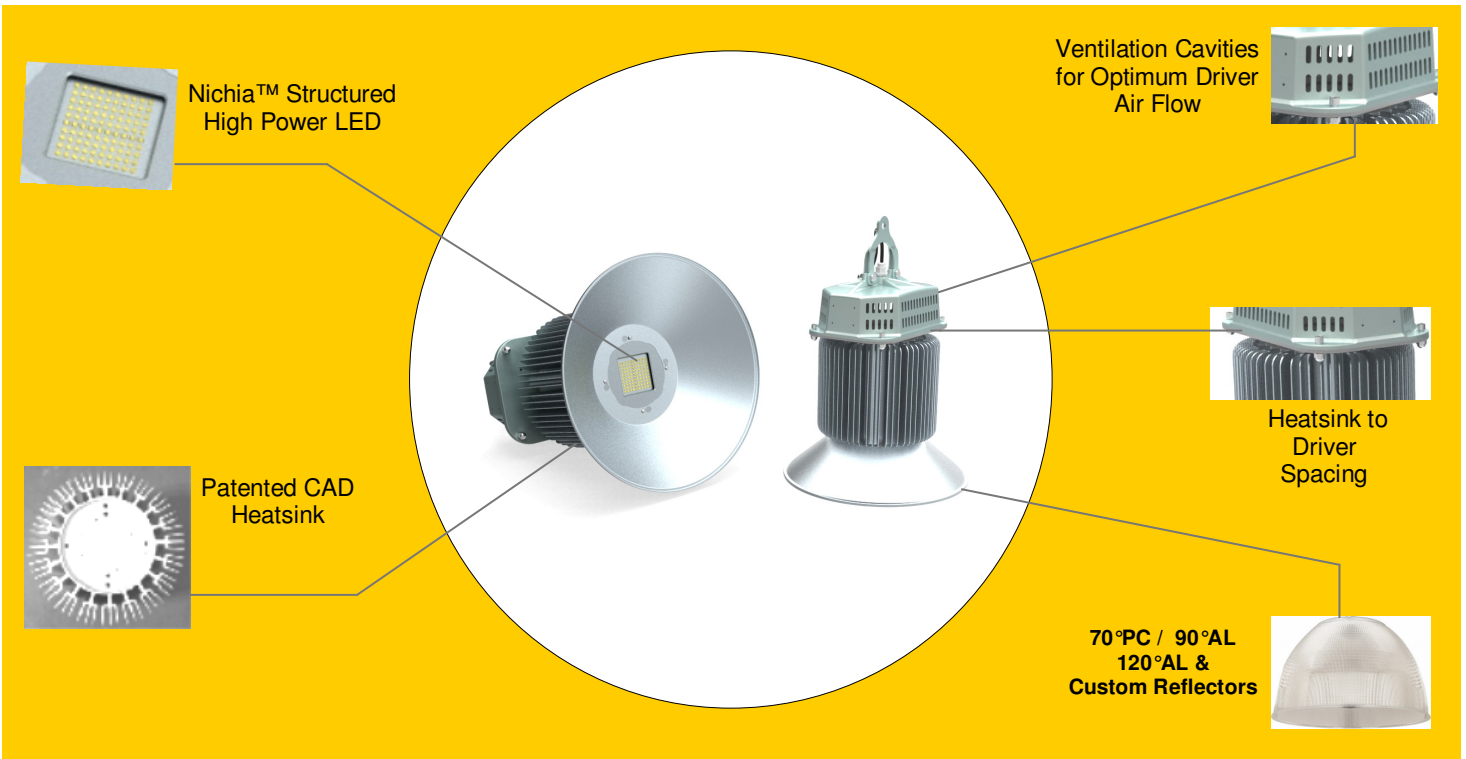
Advanced thermal pathways greatly improves heat dissipation and cooling



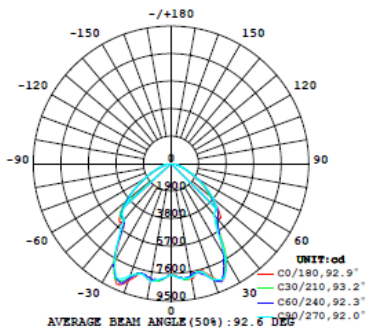
Custom heatsink extrusion for improved thermal dissipation Low Tj and longer product life



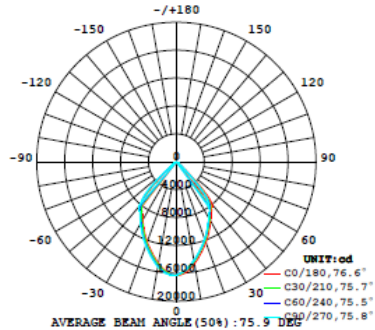
Fully encapsulated digital driver with 3 way protection



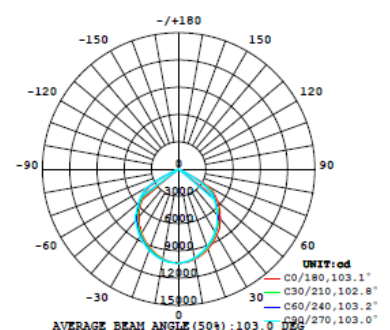
## Typical Distribution Curves (HBX-240) 70° PC



## 90° AL



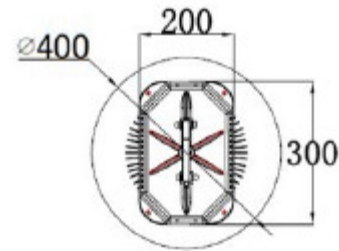
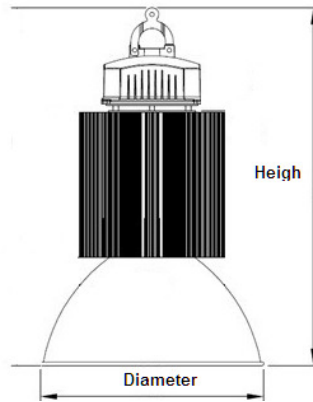
## 120° AL



# LED High Bay Luminaire

## Dimensions & Weights

HBX	120W	160W	200W	240W	REFLECTOR 70°PC	REFLECTOR 90°AL	REFLECTOR 120°AL
Dia. (mm)	400	400	400	400	410	400	400
H (mm)	465	505	555	605	260	190	97
Weight	8.50.5kg	9.0±0.5kg	10.5±0.5kg	11.5±0.5kg	0.5kg	0.5kg	0.4kg



## Mounting:

### Hook



### Chain



*The specifications in this brochure are representative and must not be interpreted as a guarantee of individual product performance and/or characteristics.  
LED RAYS Inc. has a policy of continuous advancements & development specifications may change without notice.  
Please contact your rep for updates.*

**LUMIA AGENCY**  
LIGHTING EVOLVED

Available @ [www.lumia-agency.com](http://www.lumia-agency.com)