

LED High Bay Luminaire

LED RAYS COB Array



LED RAYS
MASTERING LIGHT

HBA Series

NEW

Features

- Custom heatsink extrusion offering unparalleled thermal capability
- Bridgelux™ COB matrix
- 30W to 200W power in a hybrid array.
- Beam flexibility provides optimized photometric distribution
- Up to 19500 lm & >95lm/w
- Digital driver with 3 way I²O protection
- Exceptional power factor & low THD
- AC100-277 & 180-508V option
- 50,000hrs L70 at 30°C Ambient



Product Specifications

Model	Power	LED Type	CCT	Efficacy (avg)	Luminous Flux	Beam Angle	IP Level
LR-HBA-30-B	30W	Bridgelux™ COB	4500-6500K	≥95m/W	2800-3800lm	70°PC 90°AL 120°AL	IP30 or IP54
LR-HBA-50-B	50W	Bridgelux™ COB	4500-6500K	≥95m/W	4500-5500lm	70°PC 90°AL 120°AL	IP30 or IP54
LR-HBA-60-B	60W	Bridgelux™ COB	4500-6500K	≥95m/W	5000-6000lm	70°PC 90°AL 120°AL	IP30 or IP54
LR-HBA-80-B	80W	Bridgelux™ COB	4500-6500K	≥95m/W	6800-7800lm	70°PC 90°AL 120°AL	IP30 or IP54
LR-HBA-100-B	100W	Bridgelux™ COB	4500-6500K	≥95m/W	8500-10000lm	70°PC 90°AL 120°AL	IP30 or IP54
LR-HBA-120-B	120W	Bridgelux™ COB	4500-6500K	≥95m/W	9500-11500lm	70°PC 90°AL 120°AL	IP30 or IP54
LR-HBA-150-B	150W	Bridgelux™ COB	4500-6500K	≥95m/W	12000-15000lm	70°PC 90°AL 120°AL	IP30 or IP54
LR-HBA-200-B	200W	Bridgelux™ COB	4500-6500K	≥95m/W	17000-19500lm	70°PC 90°AL 120°AL	IP30 or IP54

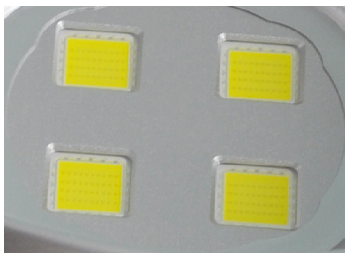
Electrical Specifications

1. Power Input: AC100-277V
2. AC180-528V (Option for 120-150-200W)
3. Power Factor: ≥96
4. THD: ≤14% @ full Load
5. Dimming: Yes optional

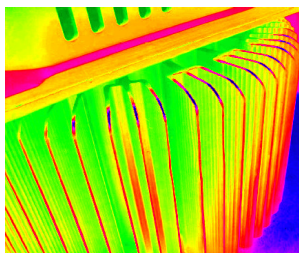


LED High Bay Luminaire

Product Specifications



Bridgelux™ COB matrix with Nichia™ Phosphor



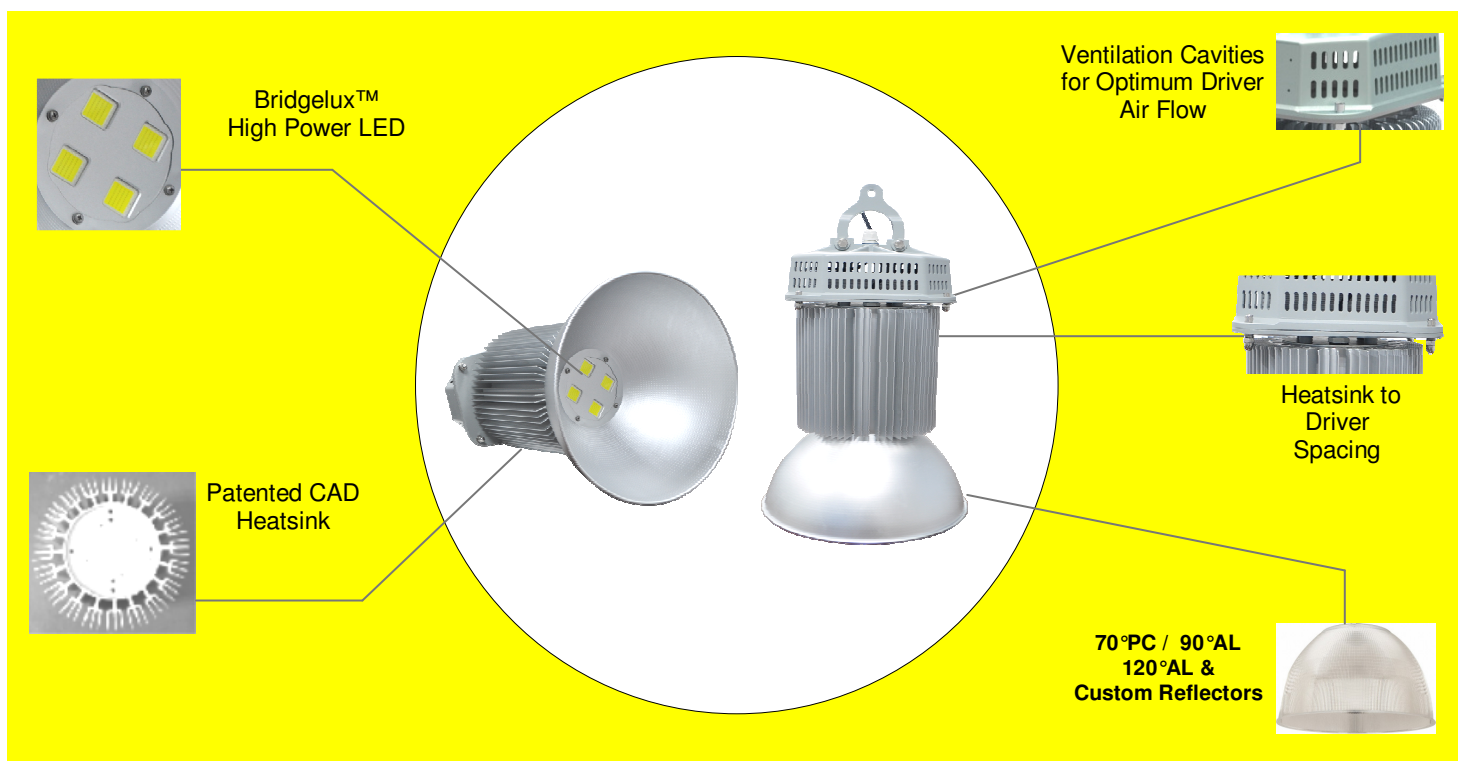
Advanced thermal pathways greatly improves heat dissipation and cooling



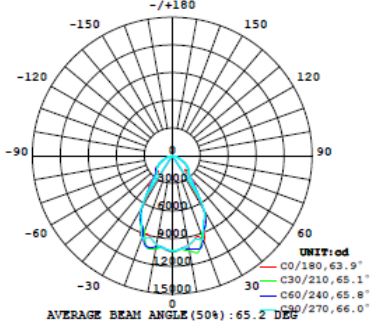
Custom heatsink extrusion for improved thermal dissipation



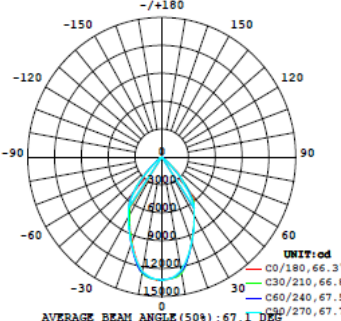
Fully encapsulated digital driver



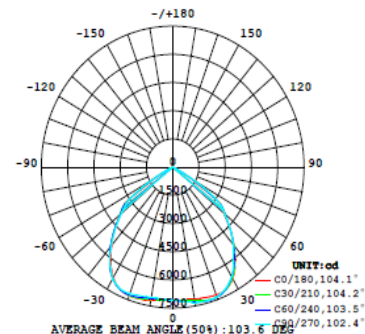
Typical Distribution Curves (HBA-200) 70° PC



90° AL



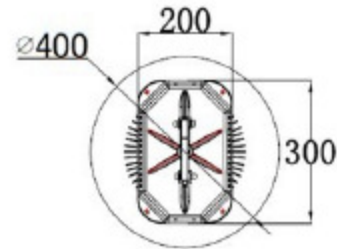
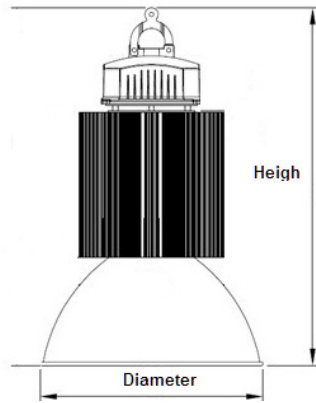
120° AL



LED High Bay Luminaire

Dimensions & Weights

HBA	30W	50W	60W	80W	100W	120W	150W	200W	REFLECTOR 70°PC	REFLECTOR 90°AL	REFLECTOR 120°AL
Dia. (mm)	400	400	400	400	400	400	400	400	410	400	400
H (mm)	430	450	510	520	550	570	590	640	260	190	97
Weight	3.0±0.5kg	3.60±0.5kg	4.2±0.5kg	4.5±0.5kg	4.9±0.5kg	6.1±0.5kg	8±0.5kg	13±0.5kg	0.5kg	0.5kg	0.4kg



Mounting:

Hook



Chain



The specifications in this brochure are representative and must not be interpreted as a guarantee of individual product performance and/or characteristics.

LED Rays Inc. has a policy of continuous advancements & development specifications may change without notice. Please contact your rep for updates.