

# LED

## Ceiling Luminaire

### LED RAYS HPL LED



# LED RAYS

MASTERING LIGHT

## CD34 Series

NEW

### Features

- Using HPL LED structure for market leading efficacy
- High luminaire efficacy (91 lm/w at 5200K)
- Available with ANSI 5200K, 4000K and 3000K color temperature
- Standard 45° beam angle and 30° option
- Digital driver with 5 way I<sup>2</sup>O protection
- Aluminium housing provides for a light and rigid carrier for the light engine
- Surface or pendant mounting
- 40,000hrs L70 at 25°C Ambient

PRELIMINARY



### Product Specifications

Model	Power	LED QTY & Type	CCT	Efficacy	Typ. Luminous Flux	Beam Angle	CRI
LR-CD3430-30S	34W	18 x HPL	3000K	≥67lm/W	2300lm	30°	80
LR-CD3440-30S	34W	18 x HPL	4000K	≥73lm/W	2500lm	30°	80
LR-CD3452-30S	34W	18 x HPL	5200K	≥91lm/W	3100lm	30°	72
LR-CD3430-45S	34W	18 x HPL	3000K	≥67lm/W	2300lm	45°	80
LR-CD3440-45S	34W	18 x HPL	4000K	≥73lm/W	2500lm	45°	80
LR-CD3452-45S	34W	18 x HPL	5200K	≥91lm/W	3100lm	45°	72

### Electrical Specifications

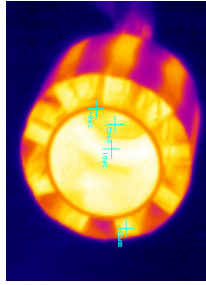
1. Power Input: AC100-277V
2. AC180-508V (Option)
3. Power Factor: ≥94
4. THD: ≤18% @ full Load
5. Dimming: Yes optional



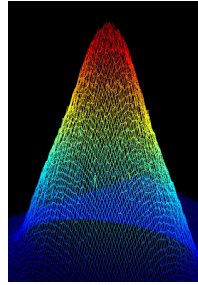
## Product Specifications



Fully serviceable design in a rugged chassis achieves high efficacy



Advanced thermal pathways greatly improves heat dissipation for a low Tj

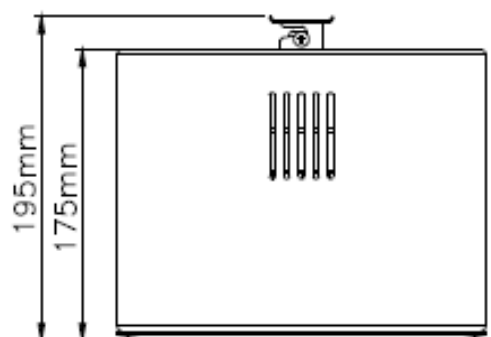
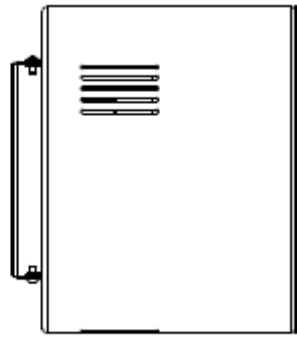
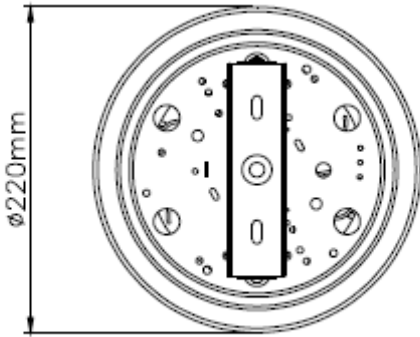


High transmission optics provide for exceptionally uniform beam distribution

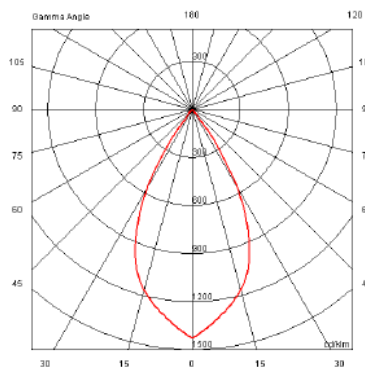
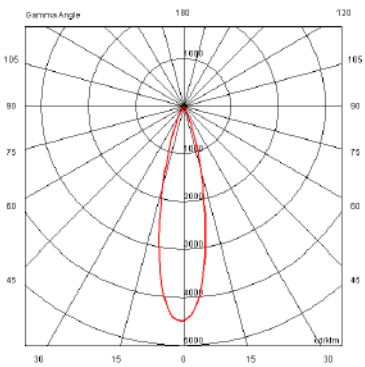


High performance digital driver

## Dimensions



## Distribution Curves



Weight: 2.0kg



*The specifications in this brochure are representative and must not be interpreted as a guarantee of individual product performance and/or characteristics.*

*LEDRAYS Inc. has a policy of continuous advancements & development specifications may change without notice. Please contact your rep for updates.*